

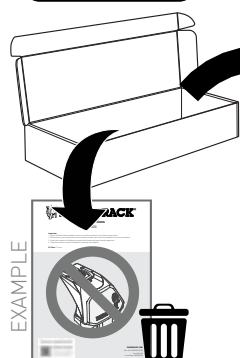
RHINO-RACK®

SPORTZ Bar



WARNING: The **Fitting Instructions** in your **Leg Box** may **NOT** include **Sportz Bar** installation steps.
Please follow the **QR code** to access the correct fitting instructions.

LEG KIT



EXAMPLE

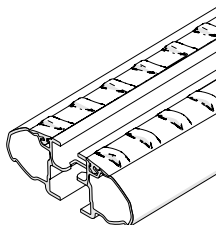


rhinorack.com/roof

1. Complete **Fit my vehicle**
2. Select your **Product Solution**
3. Scroll down to '**Product Details**'
4. Download instructions under the '**INSTRUCTIONS**' tab

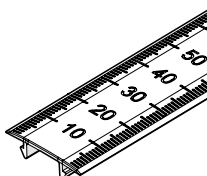
Parts

Crossbar



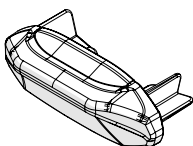
A x1

Measurement Strips



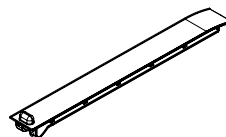
B x2

End Cap



C x2

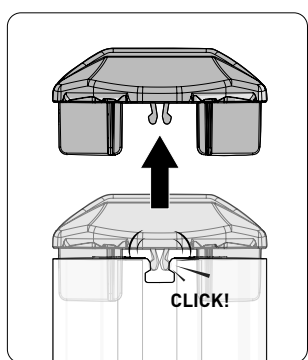
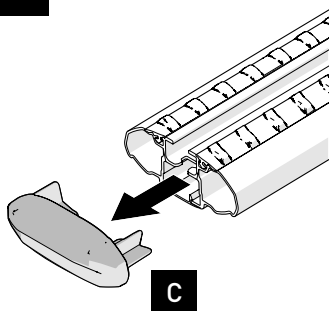
Internal Slider



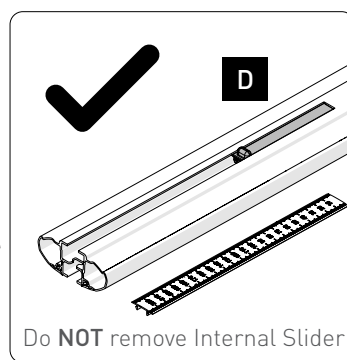
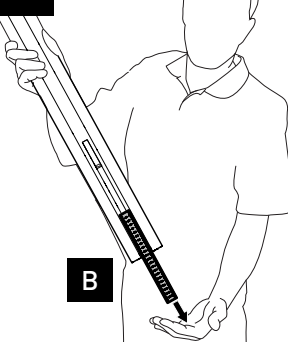
D x2

Instructions

1



2



Proceed to the leg instruction to complete leg and measurement strips installation.

Rhino-Rack AUSTRALIA

22A Hanson Pl,
Eastern Creek, NSW, 2766
(02) 8846 1900
rhinorack.com.au

Rhino-Rack USA

Unit D, 2450 Airport Blvd,
Aurora, CO, 80011
877-744-6622
rhinorack.com

Doc. No: 520-RFI-00220

Issue No: 02

Issue Date: 03/02/2025