

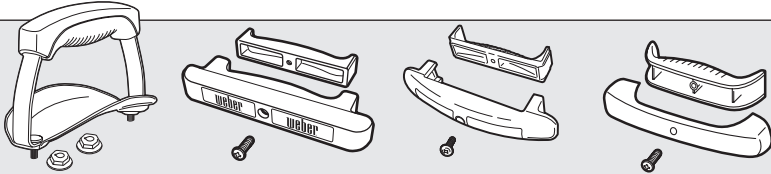


# LID HANDLE / BOWL HANDLE REPLACEMENT INSTRUCTIONS

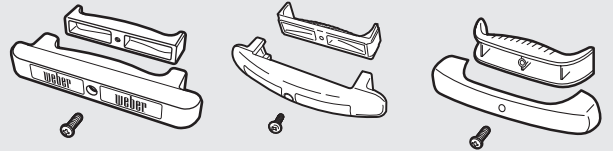
**⚠ WARNING: GENUINE WEBER-STEPHEN REPLACEMENT PARTS MUST BE USED FOR ANY REPAIR OR REPLACEMENT. YOUR ACTIONS, IF YOU FAIL TO FOLLOW THIS PRODUCT WARNING, MAY CAUSE A STRUCTURAL FAILURE, OR FIRE RESULTING IN SERIOUS PERSONAL INJURY OR DAMAGE TO PROPERTY.**

*(WILL VOID ALL WARRANTY PROTECTION)*

**⚠ IMPORTANT NOTE: BEFORE PERFORMING ANY WORK MAKE SURE THE BARBECUE IS COLD AND ALL CHARCOAL RESIDUE IS REMOVED FROM THE KETTLE BOWL AREA.**

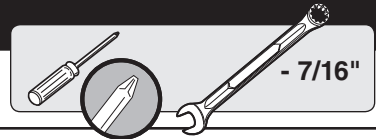
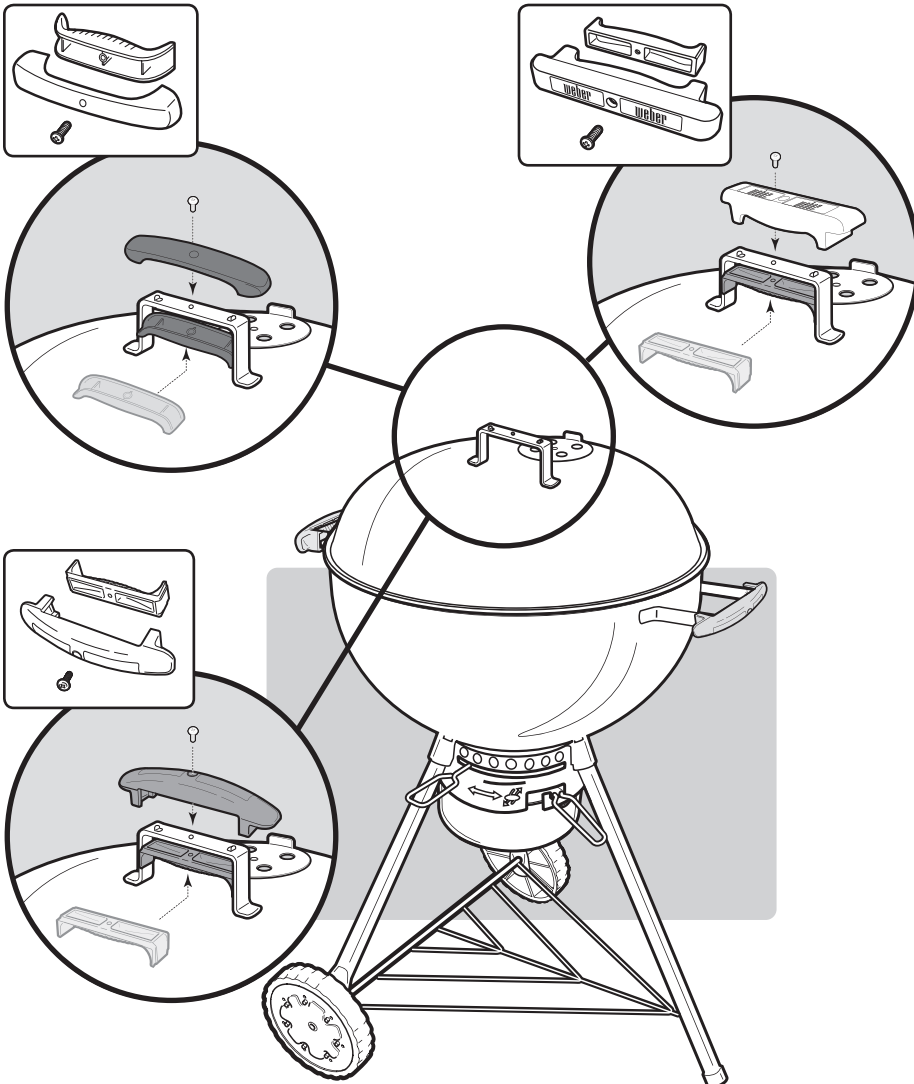


## LID HANDLE REPLACEMENT

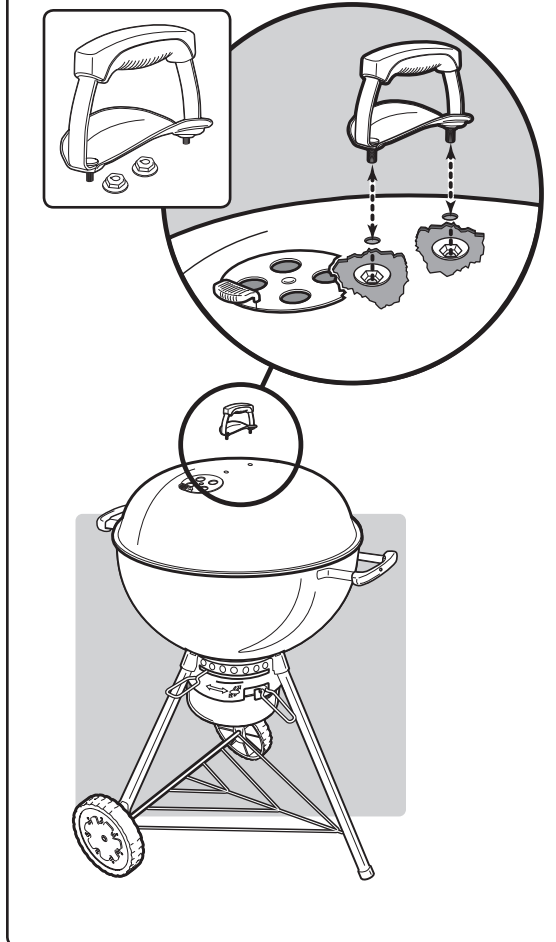


## BOWL HANDLE REPLACEMENT

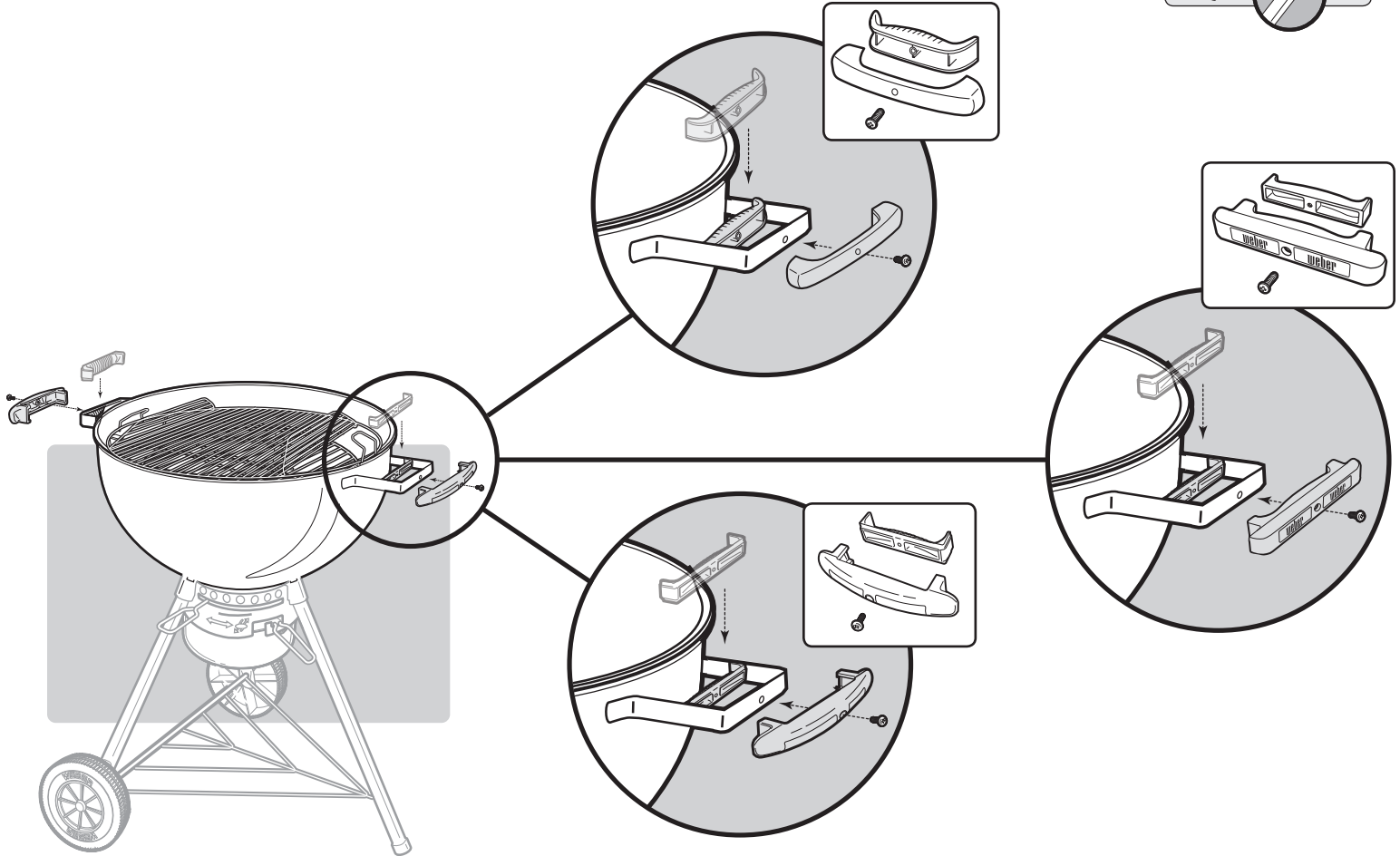
### 1 LID HANDLE REMOVAL / INSTALLATION



**GRILLS WITH HANDLE SHIELDS:**



*NOTE: The grills illustrated may have slight differences than the model purchased.*



*NOTE: The grills illustrated may have slight differences than the model purchased.*

**⚠ WARNING:** Make sure that all parts are assembled and hardware is fully tightened before operating the charcoal grill. Your actions, if you fail to follow this Product Warning, may cause a fire, or structural failure resulting in serious personal injury or damage to property.



WEBER-STEPHEN PRODUCTS LLC  
Customer Service Center  
1890 Roselle Road, Suite 308  
Schaumburg, IL 60195

1-800-446-1071 (USA ONLY)  
www.weber.com®

Contact the Customer Service Representative in your area using the contact information on our website.