

## 2 Year Limited Warranty

### **Please take time to read about the protection we offer you.**

All our products come with a guarantee designed to protect you as our valued customer. Zempire® Camping Equipment will repair or replace this product, at their discretion, should it fail due to faulty materials or manufacture for a period of 2 years from the date of purchase.

The Guarantee is subject to the following conditions:

1. The Guarantee only applies to an original purchaser who purchased this product in an unopened condition from an approved retail outlet.
2. The Guarantee does not apply if the product has been used for anything other than reasonable personal use. Commercial use (e.g. rental) or continuous use are expressly excluded.
3. Damage due to normal wear and tear, accident, acts of God, negligence (other than by Zempire® Camping Equipment), failure by the purchaser to ensure instructions for setting up and care are observed, deterioration due to abnormal exposure to ultraviolet light, damage from wind, insects, animals or mold/mildew, or any other cause reasonably beyond the control of Zempire® Camping Equipment are not covered.
4. If redress is sought under the terms of this Guarantee, then the product must be returned by the purchaser to the outlet from where it was purchased within the Guarantee period, in a clean, dry state and with proof of purchase.
5. All transport costs and any other indirect costs are excluded from the Guarantee.
6. Zempire® Camping Equipment reserves the right to make a reasonable charge for repairs which it determines are not within the scope of the Guarantee.
7. The Guarantee does not limit, modify or exclude any rights under any law if doing so would contravene that law or make any part of this Guarantee invalid. However, Zempire® Camping Equipment:
  - a) excludes (to the extent permitted by applicable law) all conditions and warranties that might otherwise be implied; and
  - b) limits its liability for breach of any such condition or Guarantee that it cannot exclude together with its liability under the Guarantee, to repairing or replacing the Goods or paying the cost of having the Goods repaired or replaced (at Zempire® Camping Equipment's option).

### **Australia Only**

Our goods come with guarantees that cannot be excluded under Australian Consumer Law. You are entitled to a replacement or refund for a major failure and compensation for any other reasonably foreseeable loss or damage. You are also entitled to have the goods repaired or replaced if the goods fail to be of acceptable quality and the failure does not amount to a major failure.

### **USA Only**

Some states do not allow the exclusion or limitation of incidental or consequential damages, so the above limitation or exclusion may not apply to you. This warranty gives you specific legal rights, and you may also have other rights which vary from state to state.

### **Europe Only**

The consumer has legal rights under applicable national legislation governing the sale of consumer goods and those rights are not affected by the guarantee.

All warranty claim processes are explained on our Zempire® website [/warranty](#) and follow the instructions to lodge a warranty claim.

### **Sales Offices:**

#### **New Zealand & Australia**

Zempire® Camping Equipment  
6 Karewa Place, Pukete,  
Hamilton, 3200, New Zealand  
Ph: +64 7 848 1610

#### **USA & Canada**

Zempire® USA INC.  
22525 SE 64th Place, Suite 200  
Issaquah, WA, 98027  
Ph: +1 206 420 0391

**Designed and tested in New Zealand. Made with care in China.**

### **i DISPOSAL**



Recycle all packaging material.

Do not discard into normal household garbage or landfill. Please contact local recycling facilities to recycle.

### **i PFAS FREE**

This product is free from PFAS chemicals for your safety and peace of mind.



## INSTRUCTION MANUAL MONSTABED QUEEN



### **IMPORTANT**

Please read and understand this manual before attempting to use this bed. Follow all instructions, guidelines and safety warnings. If you have questions about assembly, operation, servicing or repair, please call Zempire® at +1 206 420 0391 or +64 7 848 1610.

## ⚠ IMPORTANT

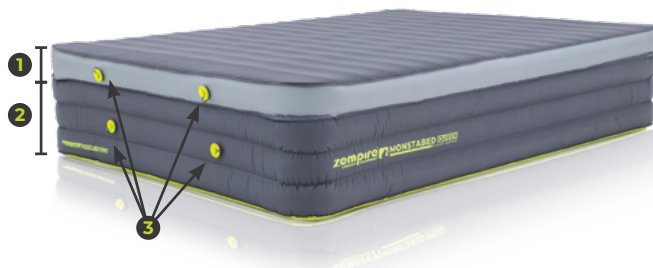
It is essential to inflate your mat to a good pressure.

Do not over-inflate as this can increase wear and tear. Inflate the mattress enough to be comfortable and allow you to sleep properly.

Self-inflation of open-cell self-inflating mats commences upon the valve opening, initiating air entry into internal cells. The process concludes upon achieving equilibrium, where internal air pressure matches external atmospheric pressure.

## COMPONENTS

- 1 Monstamat Layer
- 2 Aero-Frame Base
- 3 Valves
- 4 Valve Cap
- 5 Valve Insert
- 6 Valve Mode: Inflate
- 7 Valve Mode: Deflate
- 8 Monstapump Adapter
- 9 **Optional Add-On:**  
Zempire® Monstapump



## ⚠ IMPORTANT

Upon first use, your sleeping mat needs extra time to self-inflate from the vacuum-packed state it is initially stored in. This can occasionally cause the individual foam cells to adhere together, preventing the mat from inflating when the valve is initially opened.

A self-inflating mat inflates to approximately 80% complete on its own. So, after letting your sleeping mat sit out for 2-4 hours or overnight, inflate your self-inflating mat with air by breath or a Zempire Monstapump to give it a jump-start.

### INFLATE

1. Unroll the mat on a flat surface free of obstructions and sharp objects.
2. Unscrew the valve caps 4 and turn the valve inserts 5 to inflate mode 6 on the upper Monstamat layer 1.
3. Move on to the Aero-Frame base 2, open one valve cap 4 and turn the valve insert 5 to inflate mode 6.
4. Attach the recommended Zempire® Monstapump 9 using the adaptor 8 fitted to the inflate port on the pump and inflate the Aero-Frame base to the required level of comfort.
5. Close the valve cap 4 on the Aero-Frame base 2.
6. If necessary, top up the upper Monstamat layer 1 with more air with the Monstapump 9. Once the desired comfort level is reached, close the valve cap 4.

**Be cautious to avoid overinflation when using a pump different from the recommended Zempire® Monstapump.**

## ⚠ CAUTION

In freezing temperatures, it is best to avoid inflating your self-inflating mat with breath, as moisture can freeze inside it. Your mat may inflate slower in cold weather; use an electric pump like a Zempire® Monstapump to inflate quickly.

### DEFLATE

You can deflate your mat manually with the following steps:

1. Open the valve caps 4 and turn the valve inserts 5 to deflate mode 7.
2. To deflate the mat efficiently, roll it up starting from the end opposite the valves. This method pushes the air out of the mat as you roll.
3. As you roll the mat towards the valve end, apply pressure to squeeze out as much air as possible. Unroll the mat, fold it in half lengthwise, and start rolling towards the valve end. You can kneel or sit on the mat while rolling to expel the remaining air. It might take a couple of rolls to get as much air out of the mat as possible.
4. Once the mat is rolled up, close the valve caps.

**To achieve both the fastest and best result, you can use the recommended Zempire® Monstapump to deflate your mat by fitting the adaptor 8 to the deflate port on the pump.**

## ⚠ IMPORTANT

Always fold the mat with the sleeping surface facing in to prevent damage to the textured fabric.

### STORAGE

We recommend storing your self-inflating mat unrolled and fully inflated in a dry place with the valves open. This will ensure the foam self-inflates faster when camping. Storage for a prolonged time in a damp space may cause mildew damage, which our Zempire warranty does not cover.

### CLEANING PROCESS

Regular cleaning is essential to maintain the quality and durability of your mattress and prevent degradation from substances like food or oils.

- Lay the mat flat on the floor (or a clean work surface) and close the valve.
- Wipe the mat down with a sponge using warm water and a mild solution of dishwashing soap.
- Once the mat is clean, rinse it thoroughly (if you can do this outside, simply hosing down the mat after washing it will rinse it very effectively).

Make sure the mat is completely dry before you store it for long periods (a damp mat may grow mould on its outer surface).

### REPAIRS

A repair kit is included with your mat. Please make sure the area is clean and completely dry before repairing it.

### LOSING AIR OVERNIGHT

The first step is to determine the source of the air loss. The best option is to spray the inflated mat with soapy water.

Start by checking the valves. Make sure the valve inserts are in inflate mode and the valve caps are closed. Submerge just the part of the mat where the valve/s are located. If bubbles come from the valve, replacing the valve insert may resolve the issue.

If the air loss comes from the mat's Aero-Frame base, mark the point where the air is exiting with a ballpoint pen, dry the mat and clean the area to be repaired using an alcohol wipe. Then, use the repair kit supplied.

## ⚠ WARNING

- Avoid exposing the bed to Deet-based insect repellents, sunscreen, or chlorine to prevent damage to the fabric.
- Reduce the air pressure in your Monstated partially when keeping it inflated throughout the day, particularly if it is being stored or used in a vehicle or tent on a warm day. Fluctuations in temperature can impact the inflation of your air mattress and potentially cause damage.
- Keep the bed out of reach of pets. Dogs may be tempted to chew on the valves, while cats may use the mattress to sharpen their claws etc.
- Always transport the Monstated in the supplied carry bag to help prevent damage.
- Avoid prolonged exposure of the Monstated to direct sunlight, as ultraviolet rays can gradually deteriorate the coated fabric.
- Avoid pressurizing the mattress with high-pressure pumps exceeding 1 PSI.
- Do not use your Monstated on rocky or sharp surfaces.
- Do not expose the mattress to flames or sparks.
- Always use a ground cloth beneath the mattress unless sleeping in a tent.
- Do not use as a flotation device.
- Children must be supervised when using the Monstated.