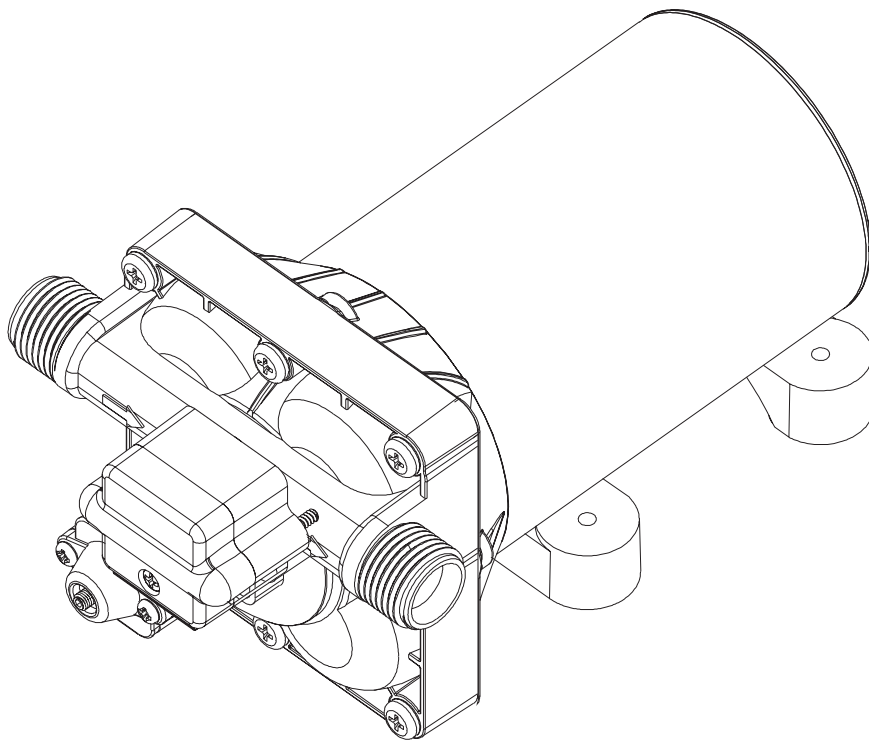




12V 11.3LPM RV WATER PUMP

INSTALLATION MANUAL



READ CAREFULLY BEFORE USING
RETAIN MANUAL FOR FUTURE REFERENCE



Read this installation instruction thoroughly.
Incorrect installation or operation may void any warranty.
Incorrect use or operation may cause serious injury.

⚠ WARNING

- Read and understand the installation manual completely before using this potable water pump. Install, test, and use only in accordance with the installation manual instructions.
- Wear personal protective gear when filling, using, cleaning, and servicing the water pump.
- Do not start water pump until ready to use to avoid unintentional distribution.
- **For indoor use only.**
- **To transfer potable water only.**
- Always keep a fire extinguisher nearby.
- Improper use of the water pump could result in serious injury to the operator or nearby persons/animals or could cause damage.
- Do not pump flammable liquids.
- Always relieve system pressure before performing maintenance.

CONTENTS

| | |
|---|----------|
| PRODUCT INTRODUCTION | 2 |
| SPECIFICATIONS | 2 |
| INSTALLATION | 3 |
| Materials Needed | 3 |
| Electrical Information | 3 |
| Caution | 3 |
| Prepare for Installation | 3 |
| Installing the 12V Water Pump | 4 |
| About the Bypass | 4 |
| ADJUSTING THE BYPASS & AUTO SHUT-OFF | 5 |
| Adjusting the Pump's Shut-Off Pressure | 5 |
| Adjusting the Bypass | 6 |
| TECHNICAL DRAWINGS | 7 |
| TROUBLESHOOTING | 8 |
| WARRANTY STATEMENT | 9 |

1300 663 868 | enquiries@aussietraveller.com.au | aussietraveller.com.au

BRISBANE SHOWROOM: 11-15 Oasis Court, Clontarf QLD 4019 | MELBOURNE SHOWROOM: 235 Barry Road, Campbellfield VIC 3061

PRODUCT INTRODUCTION

On demand, safe for drinking water in your caravan, RV or camper trailer.

Aussie Traveller's on demand 12V Water Pumps are high-quality and specifically designed for the transfer of fresh water for caravans, mobile homes, camper trailers, food vans, coffee carts and more.

The Santoprene™ diaphragm and EPDM valves provide faster priming to the Aussie Traveller RV Water Pumps.

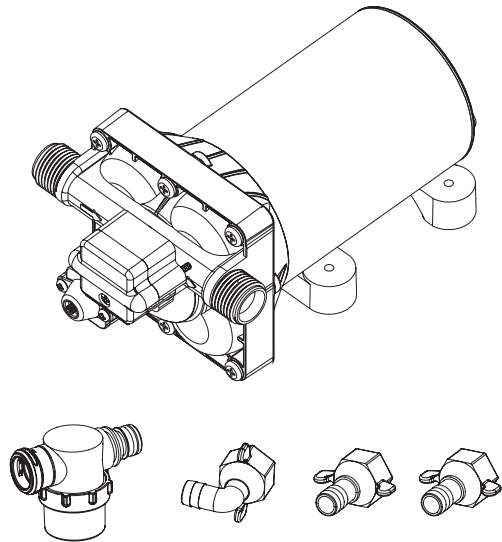
Don't worry about the power bill since the fresh water diaphragm Water Pumps automatically shut-off when there is no flow to conserve battery power. Self-priming up to 1.8m above liquid level, the thermally protected motor provides extended life and performance. The internal regulating valve maintains a steady flow at all pressures.

FEATURES:

- Steady flow rate
- Automatic shut-off
- Quiet & efficient
- Self-priming design
- Specially designed for the RV & caravanning industry
- Santoprene™ diaphragm
- 2 year warranty

PACKING LIST:

- 1 × 11.3LPM RV Water Pump
- 1 × NPSM - RV Pump Filter
- 1 × NPSM - 1/2" Hose Barb Elbow Fit
- 2 × NPSM - 1/2" Hose Barb Straight Fit
- 1 × User Manual



SPECIFICATIONS

| | |
|------------------------------|--|
| MODEL | 11.3LPM |
| PART NUMBER | 266701003 |
| ELECTRICAL CONNECTION | 12V DC |
| MAXIMUM AMP DRAW | 6.0 Amps |
| MAXIMUM FLOW RATE | 11.3LPM (3.5GPM) |
| MAXIMUM PRESSURE | 55 psi (3.8 bar) |
| INTERNAL BYPASS | Yes |
| PORTS | 1/2" MNPT |
| LIFT HEAD | 1.8m (6ft) |
| LIQUID TEMPERATURE | 60°C |
| OVERALL DIMENSIONS | 202 × 125 × 111mm |
| WEIGHT | 1.9kg |
| COMPLIANCE | AS/NZS CISPR 14.1:2021 Regulation (EC) No 1907/2006 concerning the REACH RoHS Directive 2011/65/EU with amendment (EU) 2015/863 EN 61000-6-3:2007 +A1:2011 EN IEC 61000-6-1:2019 AfPS GS: 21 section 1 No.3 ProdSG(Dated August 4, 2014)-Polycyclic Aromatic Hydrocarbon(PAHs) Content USA Food and Drug Administration Regulations FDA 21CFR 177.2600. USA Food and Drug Administration Regulations FDA 21 CFR 177.1500. USA Food and Drug Administration Regulations FDA 21CFR 177.2470. USA Food and Drug Administration Regulations FDA GRAs. |



1300 663 868 | enquiries@aussietraveller.com.au | aussietraveller.com.au

BRISBANE SHOWROOM: 11-15 Oasis Court, Clontarf QLD 4019 | MELBOURNE SHOWROOM: 235 Barry Road, Campbellfield VIC 3061

INSTALLATION

MATERIALS NEEDED:

- 1 × Diaphragm water pump with related accessories
- 2 (minimum) × pieces of flexible, reinforced hose piping, with collapsing strength of twice the inlet collapsing pressure, hose must be minimum 1/2" inside diameter
- 4 × Stainless steel hose clamps & screws
- 4 × Screws to fasten the pump to the mounting surface
- 1 × Electrical cut-off switch
- 1 × Fuse
- 1 × Screwdriver
- 1 × Strong cutting implement for tubing
- (If desired) Teflon tape or sealant

ELECTRICAL INFORMATION:

| FEET / METERS | AWG (MM ²) |
|---------------|------------------------|
| 0-20 / 0-6 | AWG16 |
| 20-30 / 6-9 | AWG14 |
| 30-50 / 9-15 | AWG12 |
| 50-65 / 15-19 | AWG10 |

CAUTION:

Please do follow the instruction manual to install the product. Any action outside what is recommended in this manual may bring damage to the pump. Any inappropriate installation or operation that causes the pump damage is not covered by warranty.

PREPARE FOR INSTALLATION:

- This pump is self-priming.
- The pump is for indoor use only and should be mounted on a solid surface in a location that is dry and provides adequate ventilation.
- **DO NOT** put the motor near plastics that could melt or any combustible material. The surface temperature of the motor may exceed 93°C (200°F).
- Prior to installation ensure properly sized wiring, proper electrical protection and adequately sized plumbing lines and connections.

1300 663 868 | enquiries@aussietraveller.com.au | aussietraveller.com.au

BRISBANE SHOWROOM: 11-15 Oasis Court, Clontarf QLD 4019 | MELBOURNE SHOWROOM: 235 Barry Road, Campbellfield VIC 3061

INSTALLATION (cont.)

INSTALLING THE 12V WATER PUMP:

1. The pump may be mounted in any position. If mounted vertically, the pump head should be in the down position to avoid leakage into the motor casing in the event of a malfunction.
2. Secure the feet, but do not compress them. Over-tightening the securing screws may reduce their ability to dissipate noise and vibration.
3. Intake hose must be minimum 1/2" (13 mm) inside diameter reinforced hose. Main distribution line from pump outlet should also be 1/2" (13mm) internal diameter with branch and individual supply lines to outlets no smaller than 3/8" (10 mm).
4. Plumb the system using high pressure (2 x pump rating), braided, flexible tubing to minimize vibration/noise.
5. Do not apply inlet pressure in excess of 30psi. In general, try to avoid any inlet pressure completely.
6. Avoid any kinks or fittings which could cause excessive restrictions.
7. Strainer should be attached to the inlet side.
8. The fittings must be secured to avoid leakage.
9. Use clamps at both ends of hose to prevent air leaks into the water line.
10. If a check valve is installed in the plumbing, it must have a cracking pressure of no more than 2 psi.
11. If applying a sealer or plumbing tape, be careful to not over-tighten, as they may be sucked into pump.
12. This pump should be wired on its own dedicated circuit. Connect the positive lead (red) to the positive terminal of your battery and the negative wire (black) to the negative terminal of your battery.
13. In an easily accessible location, install a switch to control electricity to the pump. Turn the pump off when not used for extended periods or when the tank is empty.
14. The electrical circuit should be protected with an over-current protection device (fuse) in the positive lead. This pump requires a 15 amp fuse.
15. The pump circuit should not include any other electrical loads.
16. As the water supply pump is non-essential, reference the wire Chart under the electrical information. Be sure to have the correct wire sizing for the length of wire you are using.
17. After installation, check the voltage at the pump motor. Voltage should be checked when pump is operating. Full voltage must be available at the pump motor at all times.

NOTE:

- Flexible potable water hose or PEX tubing is recommended instead of rigid piping at pump. If you choose to use rigid piping, provide a short length of hose between pipe and the pump to avoid noise and vibration.
- We do not recommend the use of metal fittings. When possible, use the provided plastic fittings.
- Do not adjust the bypass personally without the help of technician.
- Lack of sanitizing and maintenance is one of the main reasons of under performance of the pump. Please do maintenance and winterize the pump at appropriate times, especially before and after a period of storage.

ABOUT THE BYPASS:

Please consult a professional technician in the case that the bypass needs adjustment. Improper adjustment of the bypass may damage the pump.

The bypass comes pre-set for optimal operation of the pump. If your application calls for a different setting for the bypass, you may change it yourself. Carefully tighten the screw to increase or loosen the screw to decrease the minimum operational pressure of the bypass.

1300 663 868 | enquiries@aussietraveller.com.au | aussietraveller.com.au

BRISBANE SHOWROOM: 11-15 Oasis Court, Clontarf QLD 4019 | MELBOURNE SHOWROOM: 235 Barry Road, Campbellfield VIC 3061

ADJUSTING THE BYPASS & SHUT-OFF

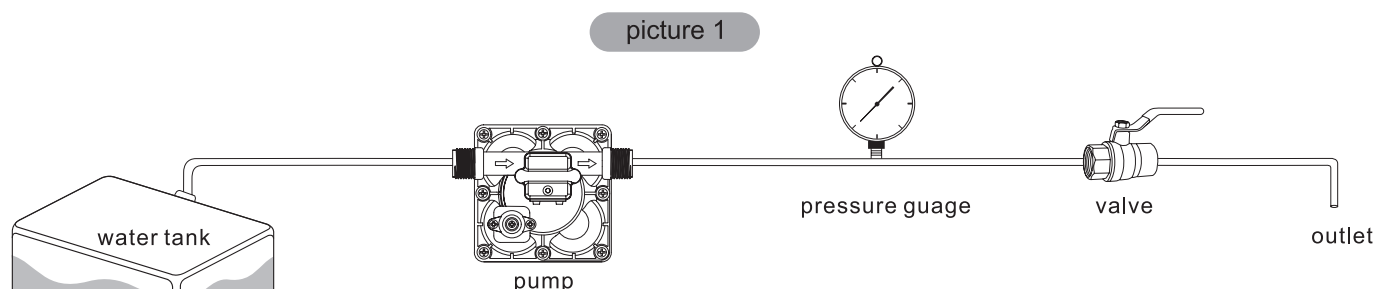
NOTE:

- Bypass adjustment should be performed by a professional technician using a proper gauge and equipment. Without the proper equipment, you could mis-adjust the valve or switch causing the pump to work improperly (see Caution on next page).

THE BYPASS VALVE

The pump uses a spring-loaded bypass valve to maintain smooth performance as water demands rise and fall. When a faucet is turned on the pump is providing full water flow, so the bypass valve is closed. But when there is little to no water demand, the bypass valve opens to allow water to flow back from the outlet side to the inlet side, keeping a steady flow of water within the pump with almost no cycling.

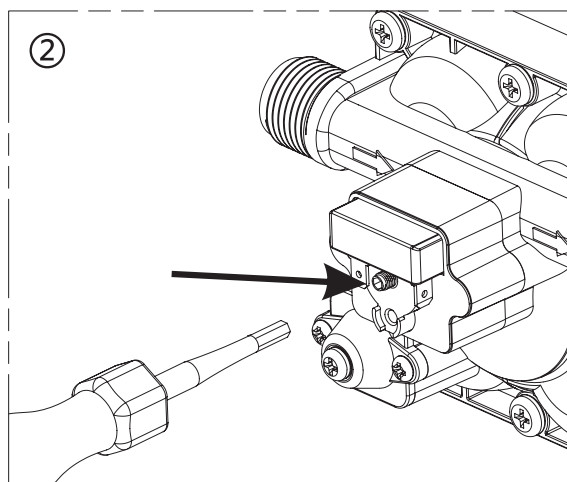
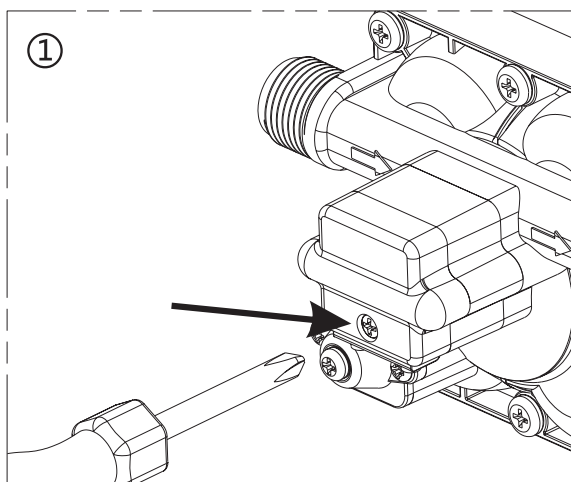
USE THE FOLLOWING PROCESS TO ADJUST THE SHUT-OFF AND BYPASS PRESSURES



1. Install the pump as the picture 1.

ADJUSTING THE PUMP'S SHUT OFF PRESSURE:

- Unscrew the front cover of the pressure switch.
- To raise the shut-off pressure, use a 2mm Allen wrench to turn the pressure switch screw clockwise to the desired pressure. To lower the shut-off pressure, use a 2mm Allen wrench to turn the pressure switch screw counter-clockwise to the desired pressure.



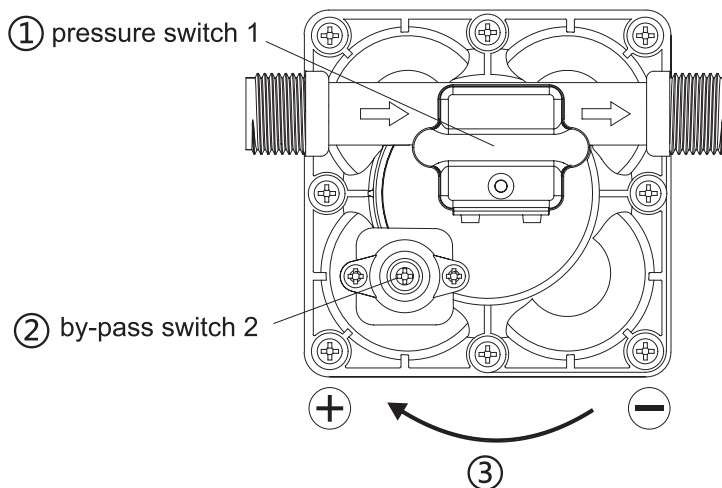
1300 663 868 | enquiries@aussietraveller.com.au | aussietraveller.com.au

BRISBANE SHOWROOM: 11-15 Oasis Court, Clontarf QLD 4019 | MELBOURNE SHOWROOM: 235 Barry Road, Campbellfield VIC 3061

ADJUSTING THE BYPASS & SHUT-OFF (cont.)

ADJUSTING THE BYPASS:

1. To raise the pressure at which the bypass starts and raise the full bypass pressure, use a 2mm Allen wrench to turn the bypass screw clockwise to the desired pressure.
2. To lower the pressure at which the bypass starts and lower the full bypass pressure, use a 2mm Allen wrench to turn the bypass screw counter-clockwise to the desired pressure.



⚠ CAUTION:

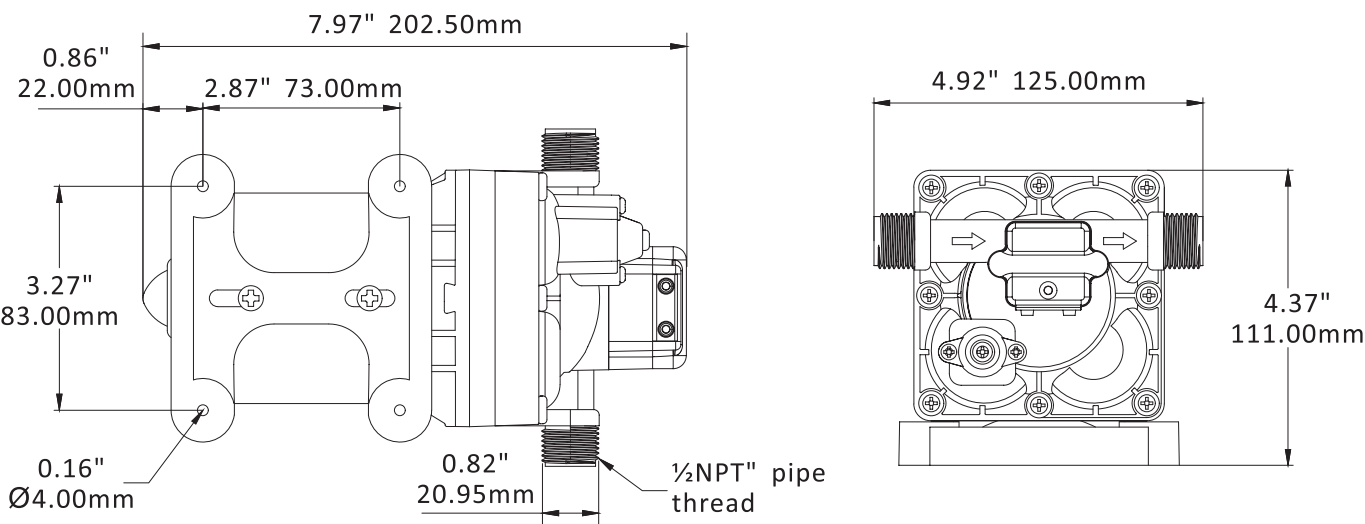
The pressure setting for full bypass must be at least 8psi higher than the shut-off pressure of the pump.

If the switch and bypass is adjusted too closely, the bypass and switch shut-off can overlap and the pump will not shut off.

1300 663 868 | enquiries@aussietraveller.com.au | aussietraveller.com.au

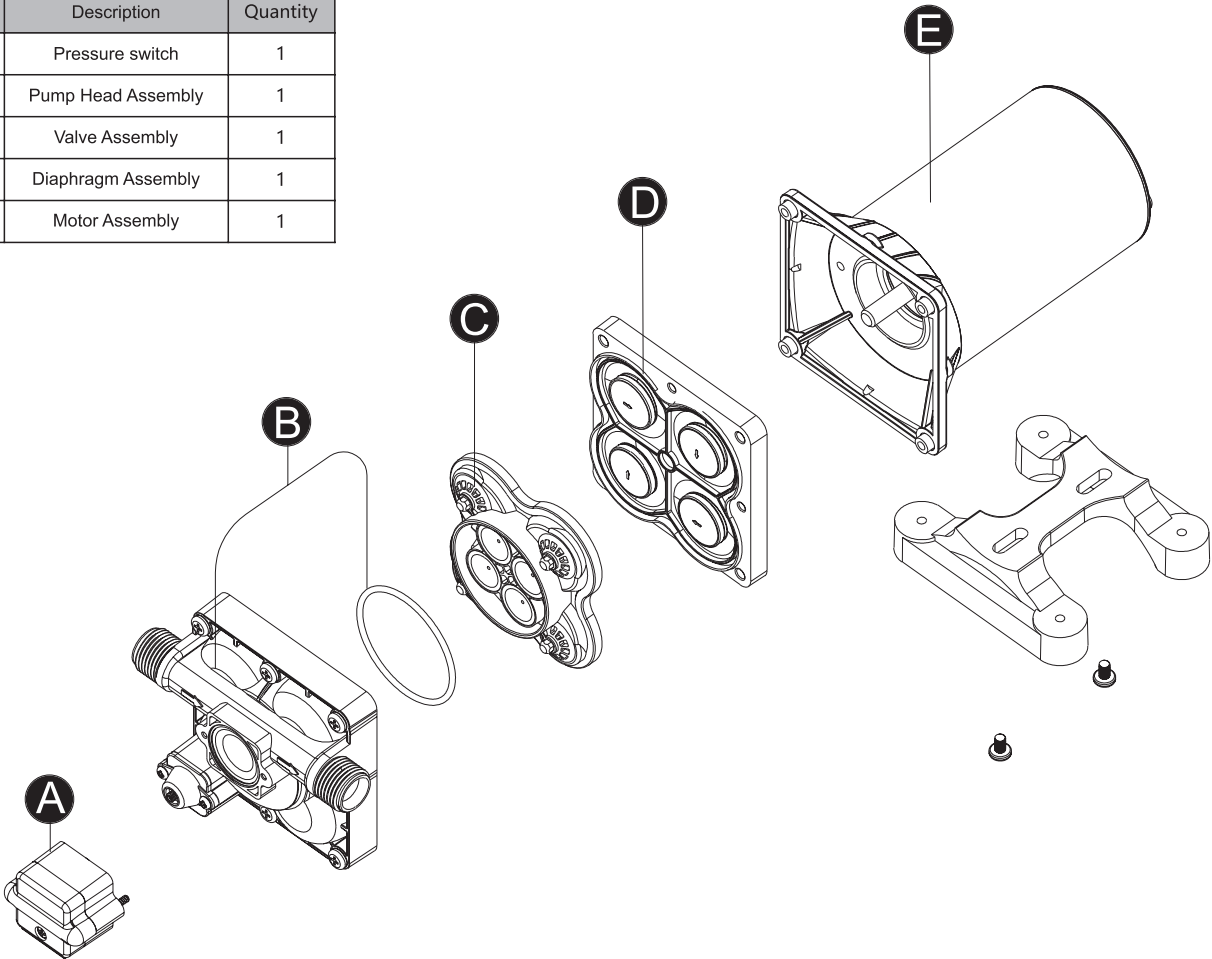
BRISBANE SHOWROOM: 11-15 Oasis Court, Clontarf QLD 4019 | MELBOURNE SHOWROOM: 235 Barry Road, Campbellfield VIC 3061

TECHNICAL DRAWINGS



EXPLOADED VIEW:

| Key | Description | Quantity |
|-----|--------------------|----------|
| A | Pressure switch | 1 |
| B | Pump Head Assembly | 1 |
| C | Valve Assembly | 1 |
| D | Diaphragm Assembly | 1 |
| E | Motor Assembly | 1 |



1300 663 868 | enquiries@aussietraveller.com.au | aussietraveller.com.au

BRISBANE SHOWROOM: 11-15 Oasis Court, Clontarf QLD 4019 | MELBOURNE SHOWROOM: 235 Barry Road, Campbellfield VIC 3061

TROUBLESHOOTING

BEFORE ATTEMPTING TO SERVICE THE PUMP:

1. PERSONAL PROTECTIVE EQUIPMENT

Wear personal protective equipment while servicing your pump.

2. REVIEW TROUBLE SHOOTING TABLE

Review the troubleshooting table below for the type of problem you are experiencing. However, DO NOT attempt to repair until the steps listed below are followed.

3. EMPTY & FLUSH

Empty the pump system and flush the pump system with potable water as directed in the Storage section, removing from storage.

4. DISCONNECT POWER/RELIEVE PRESSURE

Disconnect power to the pump and be sure all system pressure is relieved.

5. PERFORM REPAIRS

Follow the directions provided in the troubleshooting table to repair the pump.

6. TEST AFTER SERVICING

After servicing, ALWAYS test the pump for leaks with potable water before using.

| PROBLEM | CAUSE |
|---|---|
| Pulsating flow - pump cycles on and off | Check lines for kinks. |
| | Plumbing lines or fittings may be too small. |
| | Clean faucets and filters. |
| | Check fitting tightness for air leaks. |
| Noisy pump | Check if the mounting feet are compressed too tightly. |
| | Is the mounting surface flexible? If so, it may be adding noise. |
| | Check for loose head/screws. |
| | If the pump is plumbed with rigid pipe, then it may transmit noise more easily. |
| Failure to prime but motor operates - no pump discharge | Restricted intake or discharge line. |
| | Air leak in intake line. |
| | Punctured pump diaphragm. |
| | Initial amp supply is not enough to sufficiently start the motor. |
| | Debris clogged in the valves. |
| | Crack in pump housing. |
| Motor fails to turn on | Loose or improper wiring. |
| | Pump circuit has no power. |
| | Blown fuse or thermal protection tripped. |
| | Failed pressure switch. |
| | Defective motor. |
| Pump fails to turn off after all fixtures are closed | Punctured diaphragm. |
| | Discharge line leak. |
| | Defective pressure switch. |
| | Insufficient voltage. |
| | Clogged valves in pump head. |
| Low flow and pressure | Air leak at pump intake. |
| | Accumulation of debris inside pump or plumbing. |
| | Punctured diaphragm. |
| | Worn pump bearing (possibly accompanied by loud noise). |
| | Defective motor. |

1300 663 868 | enquiries@aussietraveller.com.au | aussietraveller.com.au

BRISBANE SHOWROOM: 11-15 Oasis Court, Clontarf QLD 4019 | MELBOURNE SHOWROOM: 235 Barry Road, Campbellfield VIC 3061

WARRANTY STATEMENT

Aussie Traveller Pty Ltd ACN 642 775 460 (**Aussie Traveller**) offers the following warranty in relation to the products it supplies directly or through an authorised manufacturer, dealer or approved service repair agent (**Product**).

Australian Consumer Law

The benefits of this warranty are in addition to any rights and remedies imposed by Australian State and Federal legislation that cannot be excluded. Nothing in this warranty is to be interpreted as excluding, restricting or modifying any State or Federal legislation applicable to the supply of goods and services which cannot be excluded, restricted or modified.

If you are a consumer as defined in the Australian Consumer Law: *Our goods come with guarantees that cannot be excluded under the Australian Consumer Law. You are entitled to a replacement or refund for a major failure and compensation for any other reasonably foreseeable loss or damage. You are also entitled to have the goods repaired or replaced if the goods fail to be of acceptable quality and the failure does not amount to a major failure.*

Warranty

Aussie Traveller warrants that, subject to the exclusions and limitations below, all parts of the manufacture and assembly of the Product will be free from defects in materials and workmanship (**Warranty**) for a period of 24 months from the date of purchase as follows:

1. This Warranty is activated at the time of purchase by the final retail customer (being the owner of the Product).
2. In the event the Product is purchased by a manufacturer, dealer or approved service repair agent, this Warranty will commence at the time the final retail customer makes payment for the Product to the wholesale purchaser.
3. If the Product is purchased directly from Aussie Traveller for use by final retail customer and not to be on sold in any way, the Warranty will commence at the time of the original purchase.

Warranty Period

This Warranty cannot be assigned or transferred to a subsequent owner of the Product.

The purchaser or final retail customer should inspect the Product immediately when received or at vehicle handover, to ensure that it appears free from any damage or defect, and matches the description provided.

If after accepting the Product, a defect appears in the manufacture or assembly of the Product before the end of the Warranty Period and Aussie Traveller finds the Product to be defective in materials or workmanship, Aussie Traveller will, in its sole discretion, either:

- a. replace, repair or refund the Product or the defective part of the Product free of charge; or
- b. cause the Product or the defective part of the Product to be replaced or repaired by a qualified repairer free of charge.

In arranging Warranty inspection, service and repair, Aussie Traveller will seek to provide the details of an approved service agent within your geographic area. Should one not be available, or if the Product is in use in travel, Aussie Traveller reserves the right to seek to arrange a repair or replacement at the next available location on the route of travel.

Aussie Traveller reserves the right to replace defective parts of the Product with parts and components of similar quality, grade and composition where an identical part or component is not available.

Products presented for repair may be replaced by refurbished goods of the same type rather than being repaired. Refurbished parts may be used to repair the Product.

Aussie Traveller Awning Products

This Warranty covers specified defects in materials or workmanship for Awning Products as follows:

1. The vinyl fabric is warranted against:
 - a. holes caused by mildew (mildew will form on dust and dirt and stain fabric if fabric is not kept clean).
 - b. excessive cracking, peeling, hardening or loss of strength while used under normal conditions.
 - c. excessive fading (a slight colour change may occur due to ultraviolet rays).
2. All hardware components including the roller are warranted not to bend or break under normal use (excluding high winds, water pooling and accidents).

Making a Warranty Claim

If a defect covered by this Warranty appears, the Customer must first contact Aussie Traveller within 7 days of first becoming aware of the defect. Aussie Traveller will assist the Customer to rectify and resolve any Product issue that may arise.

When making a claim under this Warranty, Aussie Traveller requires that the following information be provided before any further action will be taken.

1. Original Invoice (Document or Number);
2. Make and model of the Product;
3. Make and model of the vehicle (if Product fitted);
4. Vehicle build date (if Product fitted);
5. Vehicle chassis number;
6. Description of damage and/or repair required;
7. Photos of the damage and/or repair; and
8. Appropriate documentation (such as historical and maintenance records).

Aussie Traveller reserves the right to request more information or images should what is provided not be sufficient to make an assessment for the Warranty claim.

The Product must be made available to Aussie Traveller or its authorised repair agent for inspection and testing. If such inspection and testing find no defect in the Product, the final retail customer must pay Aussie Traveller's usual costs of service work and testing.

The final retail customer must bear the cost of the transport of the Product to and from Aussie Traveller or the authorised repair agent, and all insurance of the Product.

Exclusions

This Warranty will not apply where:

- the Product has been repaired, altered or modified by someone other than Aussie Traveller, or without the written consent of Aussie Traveller or an authorised repair agent;
- the alleged defect in the Product is within acceptable industry tolerances and variances;
- Aussie Traveller cannot establish any fault in the Product after testing and inspection;
- the Product has been used other than for the purpose for which it was designed;
- the alleged defect in the Product has arisen due to the final retail customer's failure to properly use and maintain the Product in accordance with any of Aussie Traveller's instructions, recommendations and specifications (including applicable maintenance schedules);
- the alleged defect in the Product has arisen due to the final retail customer's request to customise the Product;
- the Product has been subject to abnormal conditions, including environment, temperature, high or excessive wind, water, fire, humidity, pressure, stress or similar;
- the alleged defect has arisen due to abuse, misuse, neglect or accident;
- unauthorised parts or accessories have been used on or in relation to the Product;
- the Product has been overloaded or involved in an accident;
- the alleged damage or defect has been caused by normal wear and tear;
- the alleged damage to fabric has been caused by storm, wind or rain, or stretching of fabric caused by water pooling on fabric;
- breakage or bending of hardware components has been caused by storm, wind or rain, or water pooling on fabric.

Replacement Warranty Item

If, under Warranty, a Product is replaced or repaired by Aussie Traveller or an Aussie Traveller agent, unless provided in writing to indicate otherwise, the replacement Product will carry the **remaining** Warranty terms and conditions, including length of time, of the original purchased Product.

Change of Mind

Aussie Traveller understands that at times, final retail customers may change their mind. Choose carefully as return and credit requests for items purchased by mistake or "change of mind" reasons may not be approved. Aussie Traveller will not accept Product returns under these circumstances unless by written approval by an authorized Aussie Traveller representative. If approved, an administration and restocking fee may apply.

Limitations

Aussie Traveller makes no express warranties or representations other than set out in this Warranty.

The repair or replacement of the Product or part of the Product is the absolute limit of Aussie Traveller's liability under this express Warranty.

Contact

Australia Wide: 1300 663 868

Melbourne Office

235 Barry Road
Campbellfield, Melbourne, 3061
Ph: +61 3 9357 6565
enquiries@aussietraveller.com.au

Brisbane Head Office, Factory & Showroom

11-15 Oasis Court
Clontarf, Brisbane, 4019
Ph: +61 7 3284 3284
enquiries@aussietraveller.com.au

To receive a copy of the Aussie Traveller Warranty Terms & Conditions or information regarding specific Aussie Traveller products, please contact Aussie Traveller Head Office on (07) 3284 3284 or email enquiries@aussietraveller.com.au.

