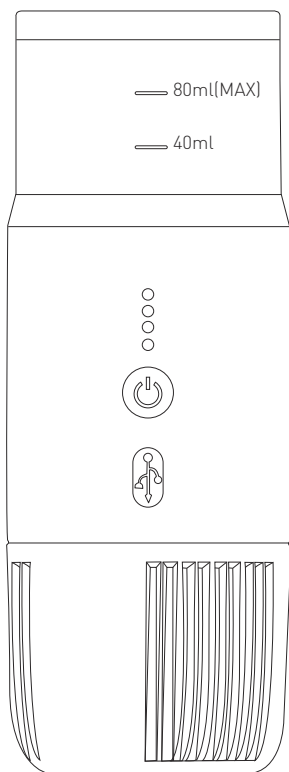


RECHARGEABLE ESPRESSO MAKER

USER GUIDE



Safety & Usage Guidelines

Please read these instructions carefully before using your coffee machine to ensure your safety and prevent damage to the device.

Key Precautions

- **Personal Use Only:** This product is designed for individual use.
- **Check Contents:** After unboxing, confirm the product is intact and all accessories are included.
- **Initial Cleaning:** Before first use, run the device with cold water (without loading the portafilter) to clean the internal parts. Simply pour cold water into the tank and press the power button. Failure to do so may prevent coffee from dispensing properly later.
- **Keep Away from Children:** Store the carry bag and accessories out of reach of children.
- **Charging Safety:**
 - Keep the product away from children while it's charging.
 - Do not leave the product unsupervised while charging, especially in a vehicle, to prevent risks from improper charging.
- **Storage:** Store the product in a cool environment, away from direct sunlight.
- **Avoid Heat & Dishwashers:** This product is **NOT** dishwasher or microwave safe. Do **NOT** place it on a gas or electric burner, or in an oven.
- **Water Quality:** Always use **purified water** only.

Operating Instructions & Warnings

- **Water Before Heating:** Always fill the water tank before activating the heating option. Heating without water will damage the product. Also, do not fill water above the maximum mark.
- **Overheating Prevention:** If you're heating continuously, the machine might stop due to overheating. Allow 15 minutes break between cycles to prevent this.
- **Hot Water Warning:** Do NOT open the water chamber lid while heating, as the water may be boiling and could cause injuries.
- **Secure Portafilter:** During extraction, ensure the portafilter is tightly secured. This is crucial for proper pressure to puncture the coffee capsule and prevent water leakage.
- **CAUTION: Hot Coffee!** The extracted coffee will be very hot. Please be careful when drinking it.
- **Post-Extraction Heat:** Be cautious when opening the portafilter and capsule basket, as temperatures may still be high after extraction.

Cleaning & Maintenance

- **Do NOT Submerge:** Do **NOT** wash the main unit of this product under water. Use a towel to wipe its surface.
- **Hand Wash Components:** The coffee cup, portafilter, capsule basket, ground coffee filter basket, and cover can be hand-washed separately.

How to Charge & What the Lights Mean

Charging & LED Indicators

- **No Operation While Charging:** The machine won't run while charging. Please ensure it's fully charged before use.
- **Use Included Cable:** Always use the charging cable provided with the device.
- **Tips:** It is important to note that poor quality adaptors and charging cables can prolong charging times and even prevent the machine from fully charging or damage it.
- **Adapter Type:** Use a USB-C adapter for charging.

LED Light Bar Indications

Battery Power Levels:

- 1 light: 25% battery
- 2 lights: 50% battery
- 3 lights: 75% battery
- 4 lights: 100% battery

Charging Status: When plugged in, the LEDs will flash to show the current battery level. All 4 lights will illuminate steadily when fully charged.

Heating & Extraction:

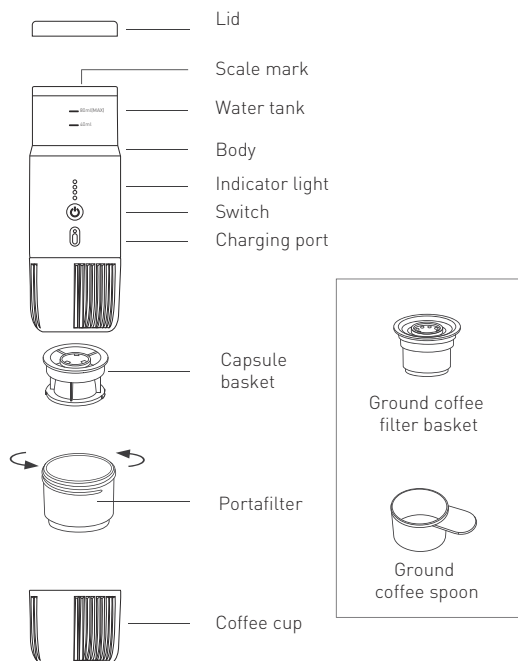
- If the battery is above **2 light bars**, it can heat and extract.
- If the battery is at only **1 light bar**, it may not be able to heat.

Checking Battery Status: To check the battery level, press the button once. If the power lights flash 5 times during use, the battery is too low, and the machine can only extract. Please fully charge the device before further operation.



Troubleshooting

Situation	Indicator lights	Solution
Low battery	The lights flash 5 times	Please operate after fully charged.
Battery overheating protection	The middle two lights flash 5 times	Please recharge or use the machine after 15 minutes.
Boil-dry protection	The lights and machine will turn off automatically.	Please pour water into the water tank before using the heating function.

Product Structure

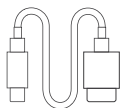


Caution: When using this coffee machine, please select the correct accessories!

<p>Capsule basket</p> 	<p>Ground coffee filter basket</p>  <p>Ground coffee loading volume: 5-8g</p>
---	--

Product Parameter

Model	MG731D11B
Water chamber material	Food grade stainless steel
Pressure	12 Bar
Built-in battery	11.1V 2500mAh
Charging data	5V/2A
Volume	Max 80ml
Extraction type	Off-line Extraction
Extraction temperature	93℃
Heating	YES 3-5 cups per full charge
Compatible	Nespresso and compatible capsules / ground coffee



USB-C cable

Tips: It is important to note that poor quality adaptors and charging cables can prolong charging times and even prevent the machine from fully charging or damage it.



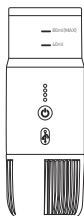
Please allow at least 5 minutes between uses where the water heating function is used.

HOW TO USE

This portable electric espresso machine is perfect for coffee lovers, supporting both ground coffee and capsule extraction. To ensure proper use, please follow the instructions below.

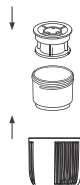
► 1. Capsule extraction

1. Check if battery is well charged.



During charging, the LED lights will flash. Once the machine is fully charged, all LED lights will remain steadily on.

2.



Disassemble the lower section

3.



Firmly press the capsule into the capsule basket, then load it into the portafilter.

4.



Twist the portafilter firmly onto the machine's body, then place your coffee cup beneath it.

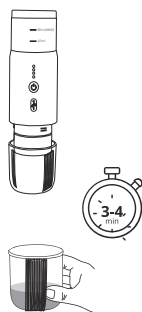
Note: Ensure the portafilter is screwed on tightly; otherwise, the brewing process will fail.

5.



Remove the upper lid, pour water into the water tank, then replace the lid.

6.



Press the button to start operation:

1. Cold Water: Press and hold the button for 5 seconds. The espresso maker will begin heating the water. The battery indicator lights will flash during heating. After 3-4 minutes, the water will reach the desired temperature and coffee extraction will start automatically.

Tip: Heating 50ml of cold water consumes less battery power than heating 80ml.

2. Hot Water: Press the button twice. Coffee extraction will begin immediately.

Tip: Using pre-boiled hot water saves time and reduces battery consumption.

Tip: Finer coffee grounds will produce more crema.

Important Reminders

Here are some important tips for troubleshooting your coffee machine:

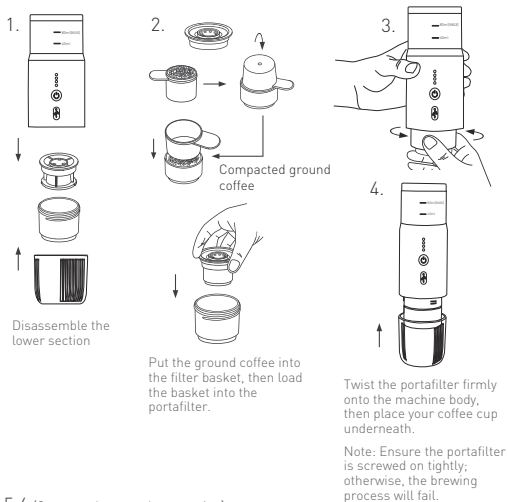
1. Capsule Puncturing Issues: If your capsules (e.g., Nespresso) aren't puncturing correctly, check these common causes:

- The capsule hasn't been pressed in firmly enough.
- The portafilter hasn't been screwed on tightly.
- The capsule adapter isn't properly installed.

2. Performance Per Full Charge

- Cold Water: You can make 3-5 espressos per full charge. Heating 50ml of cold water consumes less battery power than heating 80ml.
- Pre-boiled Hot Water: You can make up to 20 espressos per full charge.

► 2. Ground coffee extraction



Important Reminders for Optimal Performance

Here are some important reminders to ensure your coffee machine works perfectly:

1. Water Remaining in Portafilter: If you find water left in the portafilter after extraction, it's likely due to one of two reasons:

- o The **grounds filter basket or capsule basket isn't properly installed**, causing a loss of airtightness.
- o The **ground coffee is too fine**, which can clog the filter basket.

2. Extended or Manual Extraction: Extraction time might be prolonged, or the machine might not stop automatically, in the following situations. If this happens, simply **press the power button once to turn it off manually**.

- o The **ground coffee is too fine**.
- o There's **too much ground coffee** in the filter basket.
- o You're using **hard-surfaced capsules**.

3. For Long-Term Storage: If the machine hasn't been used for an extended period, the battery might be very low. In this case, the charging light may not flash immediately when plugged in. Please be patient and allow it to charge for a while.

W a n d e r e r 

PLU: 713993
CODE: MG731D11B
Manufactured & packaged for
SRGS PTY LTD
ABN 23 113 230 050
6 Coulthards Avenue, Strathpine QLD 4500, Australia
MADE IN CHINA