



28L & 20L Aluminium Water Tank



Important Safety Information

NOTE:

The safety pressure valve will deflate automatically to make sure pressure inside tank is not higher than 35 PSI. Ensure safety valve is operational by pulling and releasing 2-3 times before using.



WARNING:

DO NOT REMOVE FILLER CAP WHILE IT IS UNDER PRESSURE. YOU CAN RELEASE PRESSURE BY PUSHING THE CORE IN THE AIR VALVE, OR BY PULLING ON THE SAFETY VALVE.



Pressure warning: Do not pressurise this tank higher than 35PSI. Higher pressures could result in an explosion and possibly injury or death. If the safety valve is damaged or not working do not pressurise tank. ENSURE SAFETY VAVE IS FREE OF OBSTRUCTION.



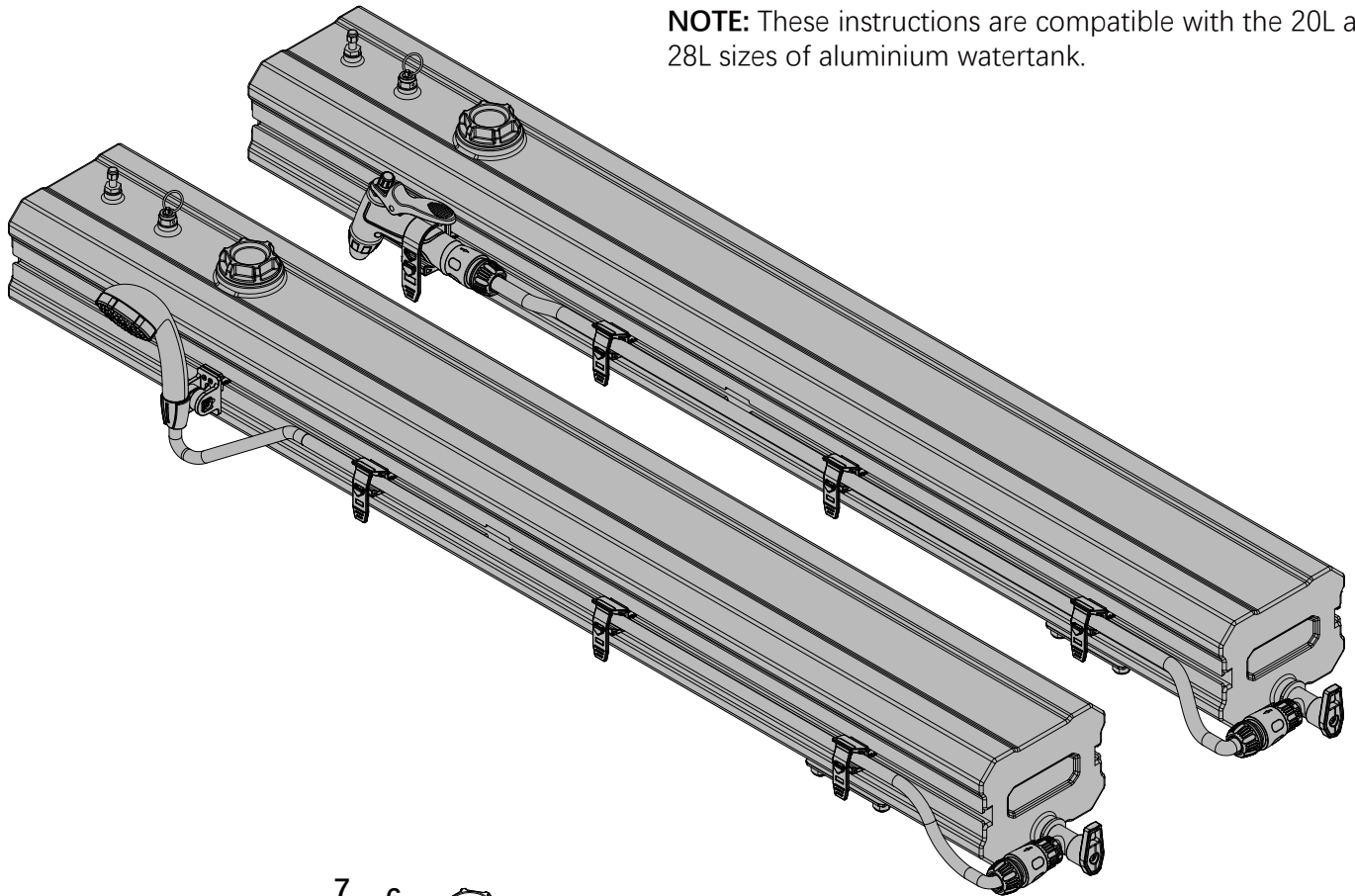
When the weather is hot, water in the tank could scald the skin. Spray water for 5 to 10 seconds and check is has cooled down prior to use.



DO NOT DRINK FROM THIS WATER TANK. To be used as a portable water source for cleaning and showering.

Aluminium Water Tank Overview

NOTE: These instructions are compatible with the 20L and 28L sizes of aluminium watertank.



Contents

- | | |
|---------------------------------|-----------------------|
| 1: Camping Shower water tank X1 | 4: Screw X6 |
| 2: Water valve X1 | Fixing plate X3 |
| Washer X1 | Washer X6 |
| O ring X1 | Nut X6 |
| Connector X1 | 5: Tank cap X1 |
| 3: Hose X1 | O ring X1 |
| Spray gun X1 | 6: Safety valve X1 |
| Quick release | O ring X1 |
| hose socket X2 | 7: Air valve X1 |
| | 8*: 28L-Quick grip X3 |
| | 20L-Quick grip X2 |

Accessories

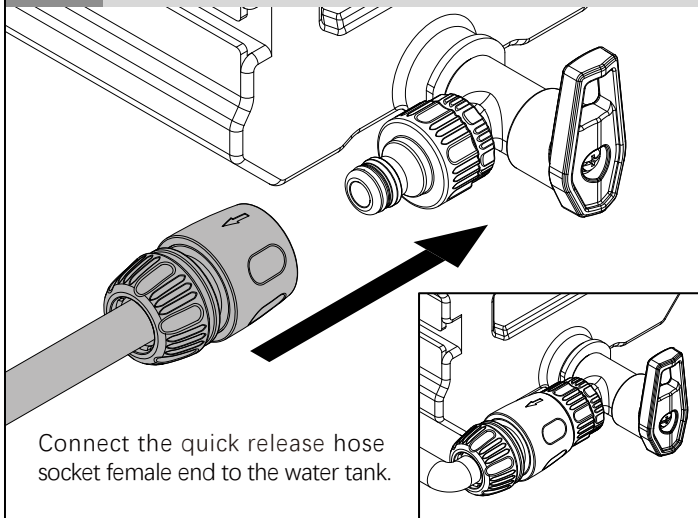
Screw X6
Washer X6
Nut X6
Bracket X6
Shower head X1
Base X1
Hose X1

Specification

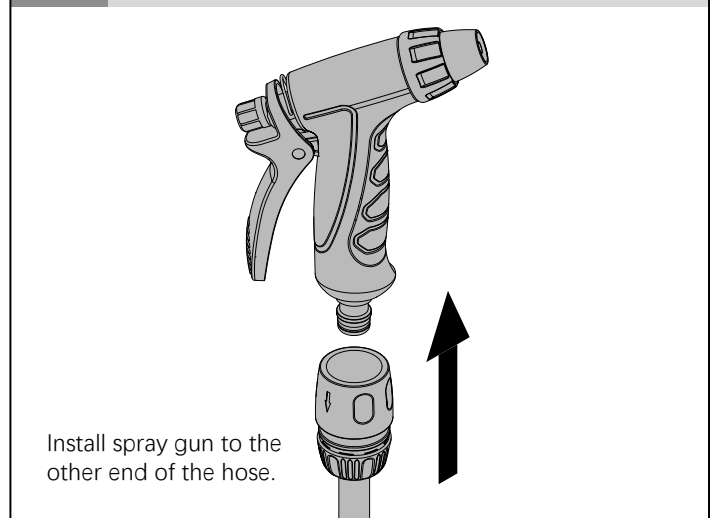
Name	Camping shower			
Material	Aluminum			
Colour	Black			
Model	20L		28L	
Package	1210x265x250 mm	47.6x9.9x9.8 in	1560x265x250 mm	61.4x9.9x9.8 in
Dimensions	1129x202x187 mm	44.5x7.9x7.4 in	1497x202x187 mm	58.9x7.9x7.4 in
G.W	10.5 kg	23.1 lbs	12.5 kg	27.5 lbs
N.W	7.2 kg	15.9 lbs	9 kg	19.8 lbs
Capacity	20 L	8.3 gal / 703.9oz	28 L	7.4 gal / 946.8oz
Max air pressure	35 psi	2.4 bar / 241.3 kPa	35 psi	2.4 bar / 241.3 kPa

Aluminium Water Tank Instructions

1 Attach the hose to water tank

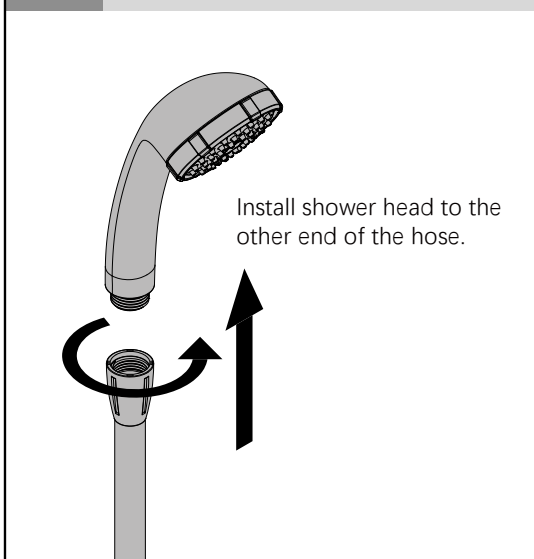


2 Attach spray gun to hose

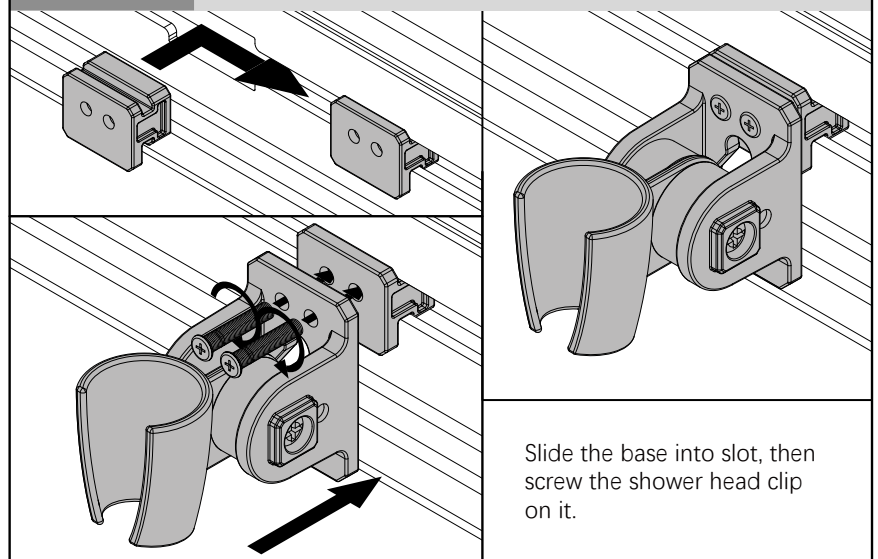


Accessory Assembly

2 Attach to the hose

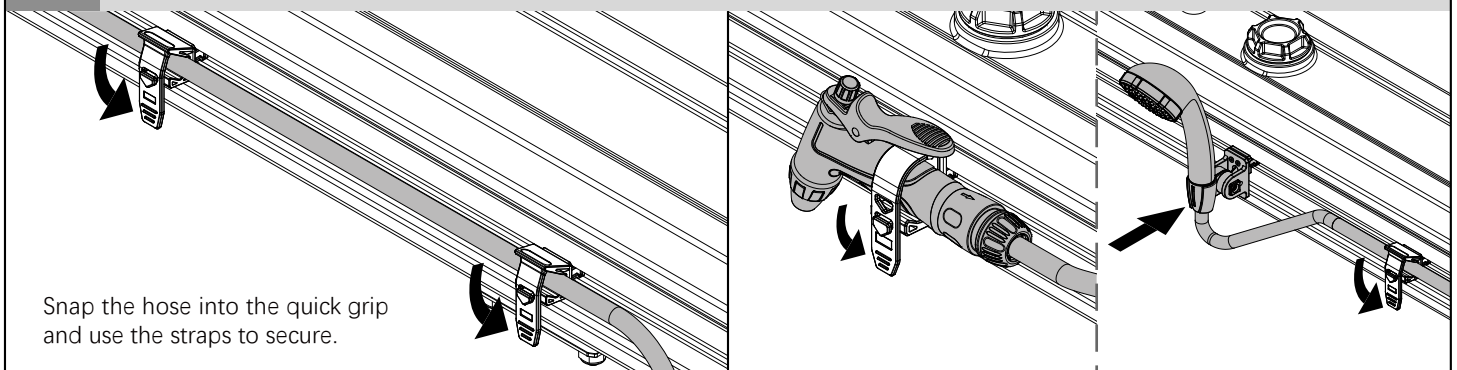


2-2 Install the base



Before proceeding to the next step, please check whether the connectors at both ends of the hose are installed correctly. Incorrectly installed connectors may result in leakage.

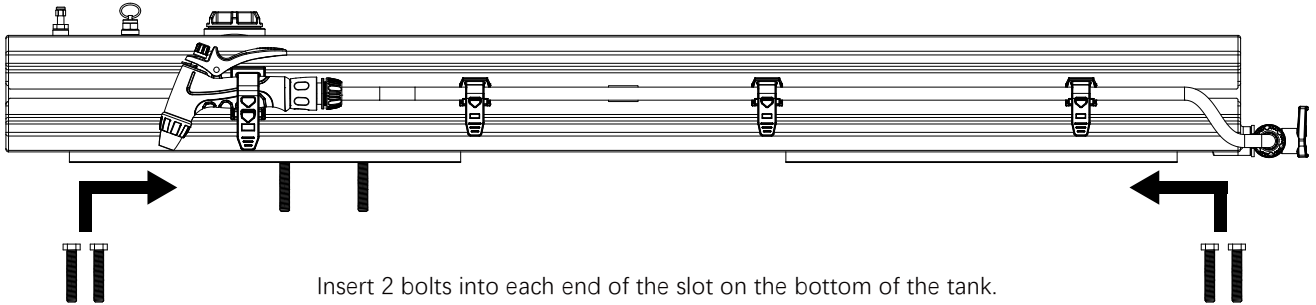
3 Secure the hose to water tank



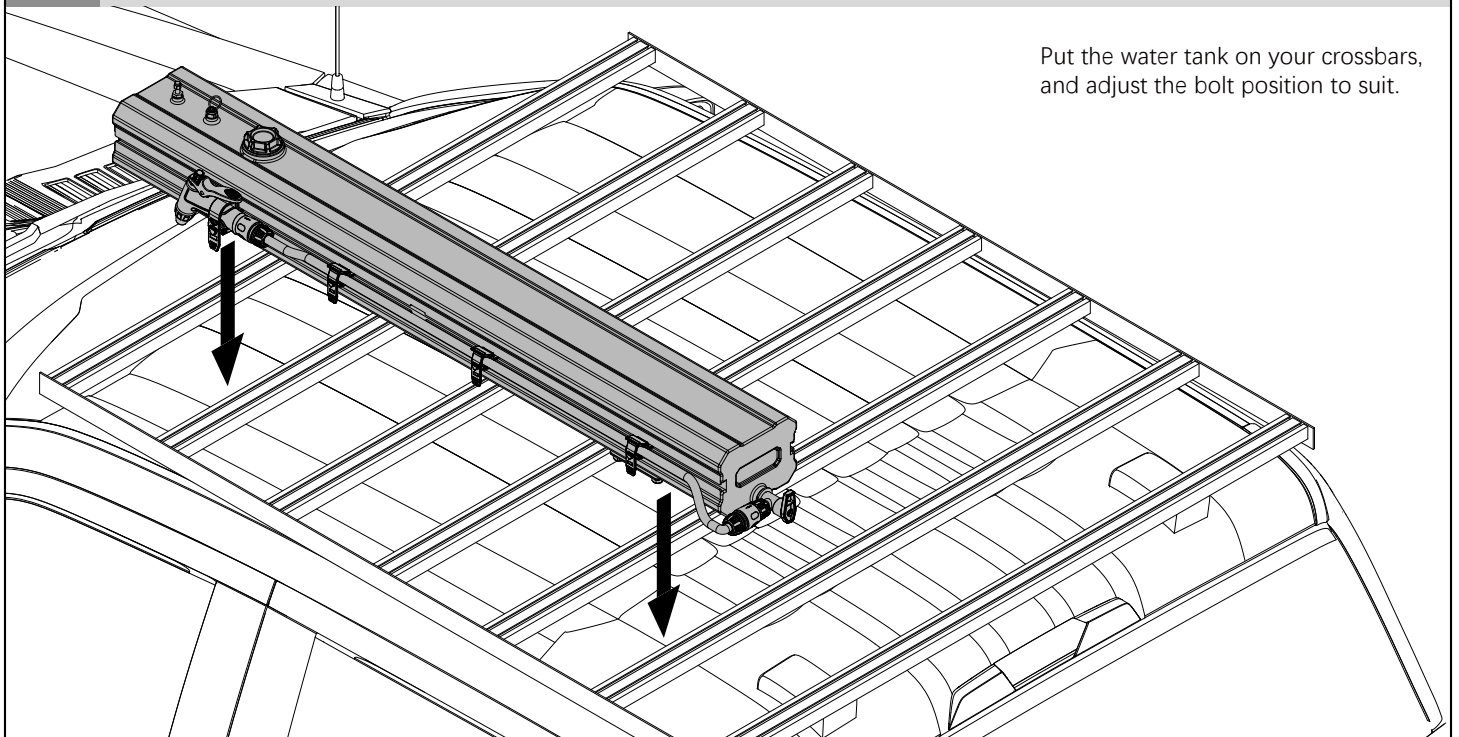
Aluminium Water Tank Mounting Instructions (Option A)

When roof racks are perpendicular to car

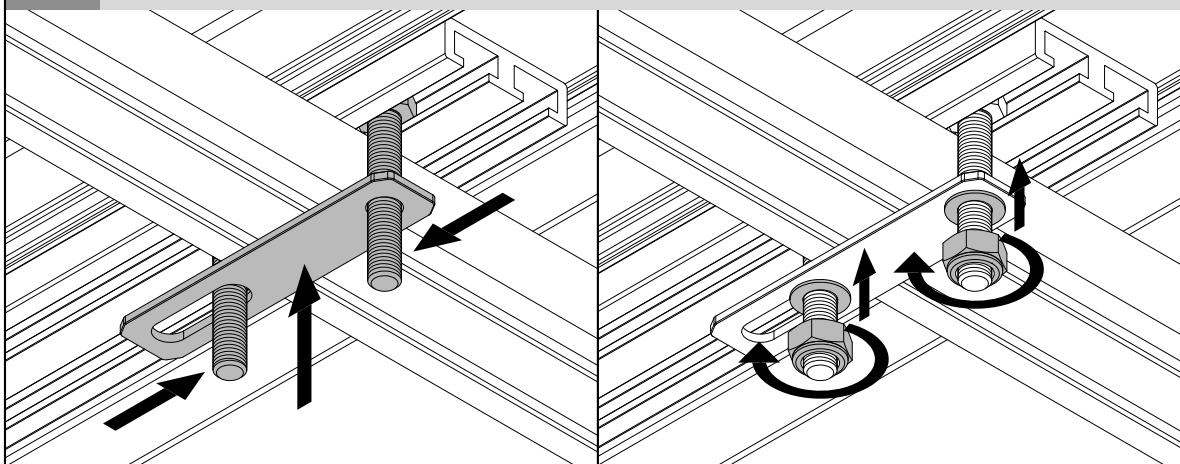
4 Install the screws to water tank



5 Position the water tank



6 Fix the water tank

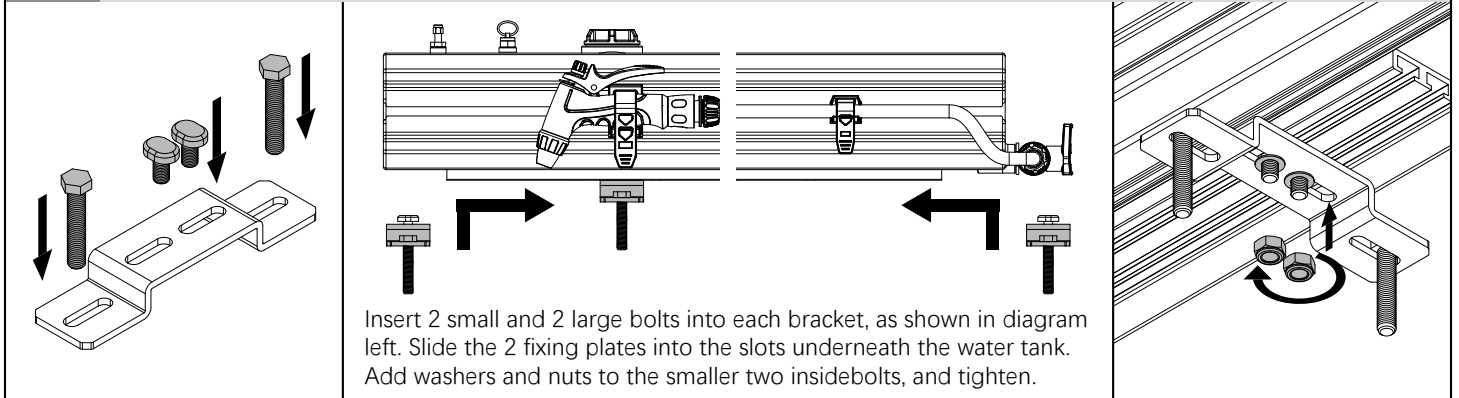


Push bolts as close together as the cross-bars will allow. Slide over the fixing plate. Then add a washer and nut on each bolt and tighten. Do not cause the fixing plate to bend significantly.

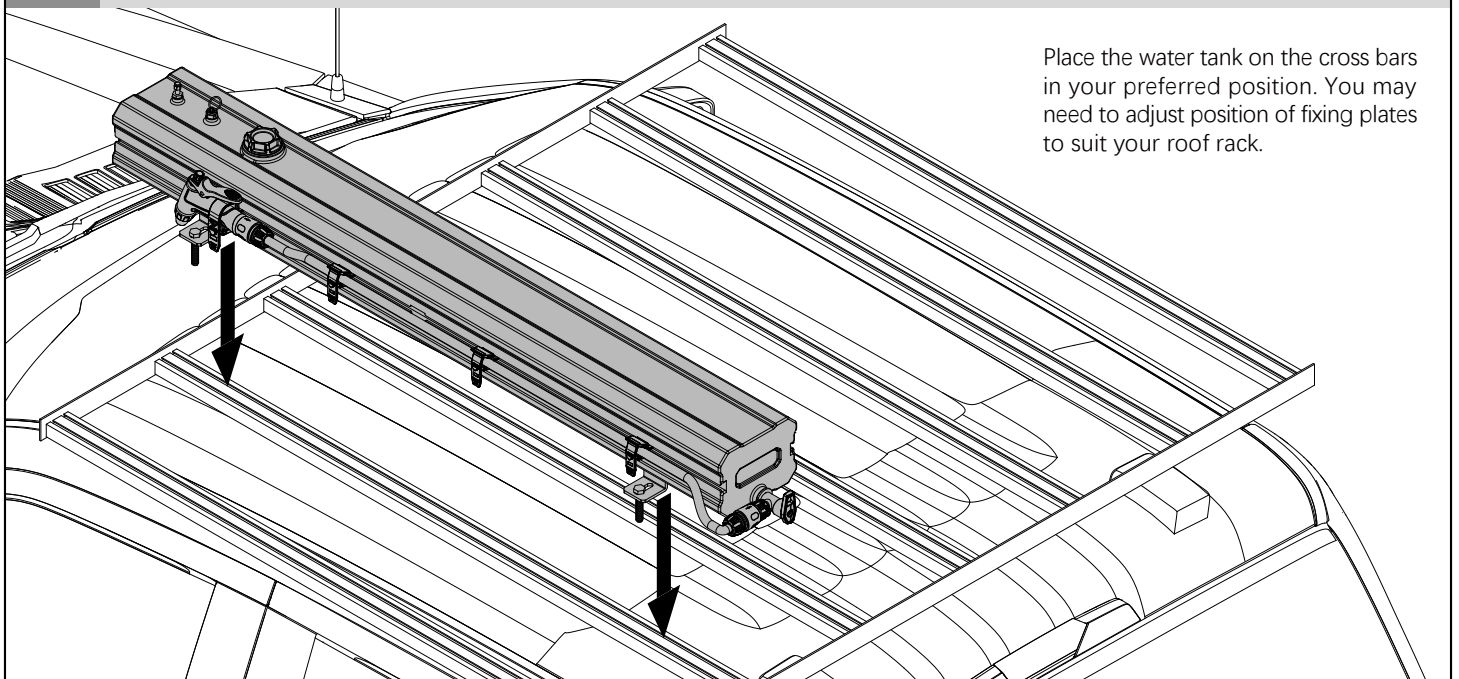
Aluminium Water Tank Mounting Instructions (Option B)

When roof racks are parallel to car

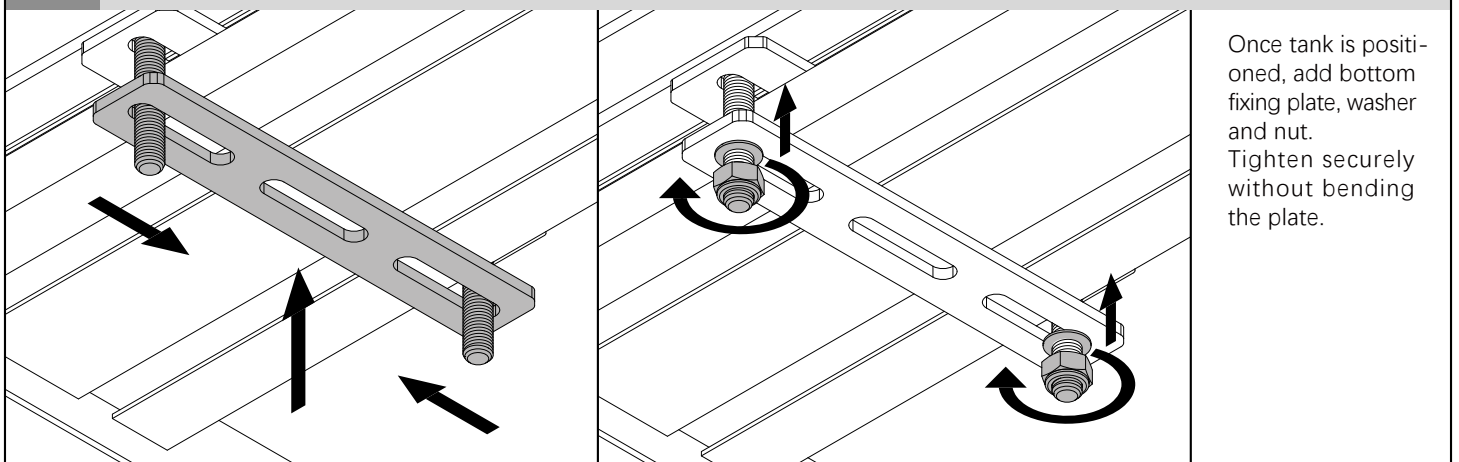
4 Install the screws to water tank



5 Position the water tank



6 Fix the water tank



Care and maintenance

Cleaning tank:

The best way to keep water tank in good shape is by regular cleaning to remove any build up of dirt. If left for an extended period of time, grime can cause staining. When cleaning the water tank, you should always start with the mildest method possible, and only move to harsher treatments if absolutely necessary.

The cleaning methods in ascending order of harshness are:

- Plain water
- Mild soap / detergent
- Non-etching chemical cleaner
- Abrasive cleaner

After cleaning the water tank it should be rinsed thoroughly.

Usage:

Do not leave water in the tank for extended time periods. Rinse before filling. Unfiltered water with a high mineral content is more likely to cause aluminium corrosion.

Regular inspection:

Regular inspections can help you detect potential problems earlier, such as leaks, loose parts, or even cracks. If you live in a hot or coastal environment, you should increase the frequency of inspections, because the water tank will age faster in these environments.

WARRANTY:

Our product is guaranteed to be free from quality and manufacturing defects for a period of 12 months.

Our goods come with guarantees that cannot be excluded under the Australian Consumer Law.

You are entitled to a replacement or refund for a major failure and compensation for any other reasonably foreseeable loss or damage.

You are also entitled to have the goods repaired or replaced if the goods fail to be of acceptable quality and the failure does not amount to a major failure.

If your product becomes defective during the warranty period, BCF will offer you either a replacement, credit or refund.

This warranty will not cover substantially modified product; misuse or abuse of the product contrary to user instructions or packaging label, change of mind and normal wear and tear.

To claim the warranty, take the product to reception at a BCF store. You will need to show receipt or other proof of purchase. Additional information may be required to process your claim. Should you not be able to provide proof of purchase with a receipt or bank statement, identification showing name, address, and signature may be required to process your claim.

Any expenses relating to the return of your product to the store will normally have to be paid by you.

The benefits provided to the consumer by the warranty are in addition to other rights and remedies available to the consumer under the law.

PLU: 701671 (20L) & 701672 (28L)
Manufactured and packaged for:
SRGS PTY LTD
ABN 23 113 230 050
6 Coulthards Avenue
Strathpine QLD 4500, Australia
MADE IN CHINA