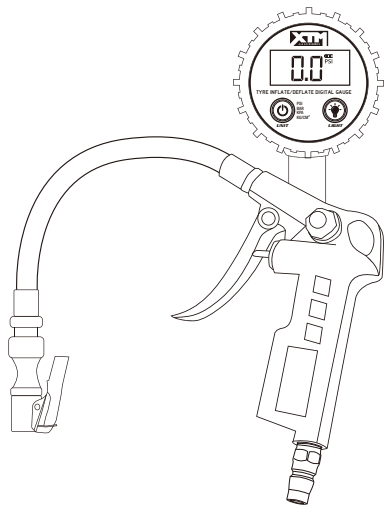




# + TYRE INFLATE/DEFLATE DIGITAL GAUGE

## Instruction Manual

To ensure correct operation, please carefully read the manual before installation.

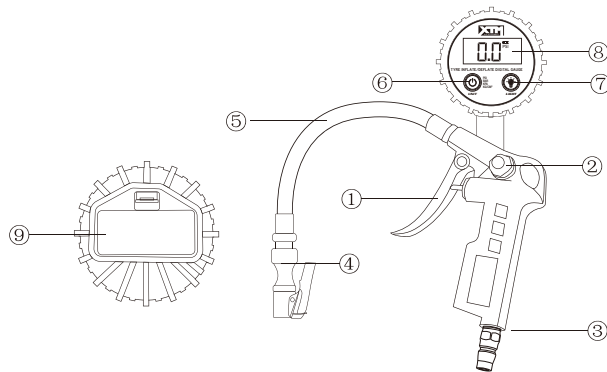


PLU: 693632

### + WARNING

- Read and follow instructions before use.
- Do not use this product for activities outside its intended use. Do not use this product if found as defective.
- Keep this product out of children's reach. Do not expose this product to rain or water.
- Keep this product away from fire, corrosive liquids and magnetic substances.
- Do not exceed the maximum pressure of the device.
- Remove the battery if not in use for extended periods of time.

### + DIAGRAM



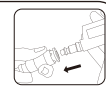
- ① Valve Trigger
- ② Air Bleed Valve/Reset Button
- ③ Male Connector
- ④ Interchangeable Brass Chucks
- ⑤ Rubber Hose
- ⑥ Power/Unit Button
- ⑦ Backlight Button
- ⑧ Digital Gauge Display
- ⑨ Battery Compartment

### + SPECIFICATIONS

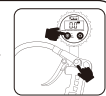
Pressure Range	0-200 PSI
Hose Length	32CM
Pressure Unit	PSI, BAR, KPA, KG /CM <sup>2</sup>
0-100psi Accuracy	±1PSI
Over 100psi Accuracy	±2PSI

### + OPERATION INSTRUCTIONS

- ① Connect the tyre inflate/deflate digital gauge to an air compressor with the quick-connect air fitting.



- ② Turn the inflator gauge on by pressing the power/unit button. Press it again to select the unit you would like to measure in. Press the air bleed valve to ensure the gauge is set to zero.



- ③ Use the chuck to connect to the tyre valve by pressing the tyre's valve stem into the mouth of the chuck.

For the locking chuck, press the trigger while placing it

onto the valve stem and release it once there is a strong seal. It should lock in place.



- ④ Fill by pressing the valve trigger until your desired pressure is reached.

Note: While inflating the tyre, the pressure reading will not

indicate the exact pressure of the tyre. To check on the tyre's current pressure, release the valve trigger and the display will instantaneously show your tyre's pressure.



⑤ Release excess air using the air bleed valve/reset button.

If your tyre's pressure is higher than your desired level, press the bleed button to adjust the pressure down.



Note: while bleeding air from the tyre, the pressure reading will not indicate the exact pressure of the tyre. To check on the tyre's current pressure, release the bleed button and the display will instantaneously show your tyre's pressure.

⑥ Gauge will automatically shut off 30 seconds after use.

Gauge can be manually turned off by holding the Power/Unit button down for more than one second.



## Checking Tyre Pressure

1. The inflator gauge can be used to check tyre pressure without connecting to an air compressor.
2. Simply use one of the interchangeable air chucks to connect the inflator to your tyre's valve stem. Make sure the inflator gauge is powered on and your desired measurement unit is selected.
3. You can still utilize the Air Bleed Button when not connected to an air compressor, but you cannot inflate tyres without an air compressor.
4. What to do if air leaks through the chuck:
  - a. Connect the chuck to the tyre valve and press hard to get a good seal.
  - b. Rotate the chuck clockwise 180°~360° to stop air leaking.

## + CHANGING THE BATTERY

① Locate the battery compartment on the back of the tyre pressure gauge and remove the back cover.



② Locate the 2 x AAA batteries, remove them, and replace with new batteries. Take care to replace the batteries in the correct direction, matching polarity with the indicated diagrams.



## + TROUBLE SHOOTING

Inaccurate Reading	<ol style="list-style-type: none"><li>1. Adjust the angle between the air chuck and the tyre valve to ensure a strong seal</li><li>2. Small differences between gauges is normal.</li></ol>
Air Leaking	<ol style="list-style-type: none"><li>1. It is normal for air to leak slightly when the chuck is connected and removed from the tyre valve.</li><li>2. Check if there is a strong seal between the chuck and tyre valve.</li><li>3. Adjust the angle between the air chuck and tyre valve.</li><li>4. Check all the connection points of the Air Compressor, Inflator, Quick-Connect Fitting, Air Chuck, and Tyre Valve Stem. All connections should not have a leak; Any threads may require teflon tape for complete seal.</li></ol>
Backlight will not tun on.	Press the backlight button. If it does not work, replace the battery.

**IMPORTANT:** When using the XTM Tyre Inflate/Deflate Digital Gauge with an air compressor that does not have an in-built pressure switch, please turn off the air compressor between inflations to prevent excessive pressure build up in the air lines.

PLU: 693632 CODE: YT240417  
Manufactured & packaged for SRGS PTY LTD  
ABN 23 113 230 050  
6 Coulthards Avenue  
Strathpine QLD 4500, Australia  
MADE IN CHINA