



JET TECH BOARD RACK ASSEMBLY INSTRUCTIONS

Thank you for your purchase!

We strongly recommend you to visit our website and watch our **installation videos** for a quick and easy assembly:

<https://jettech.com/pages/fitting>

KOOK ALERT!!

- PLEASE FOLLOW THE INSTRUCTIONS CAREFULLY
- IT IS VITAL THAT THE CLAMP IS INSTALLED CORRECTLY + TIGHT
- INCORRECT ASSEMBLY CAN RESULT IN LOSS OF RACK & PERSONAL BELONGINGS
- WHILST RACK IS ATTACHED, DO NOT WAVE JUMP OR PLAY "SILLY BUGGERS"



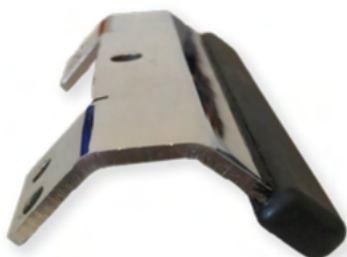
BEFORE GETTING STARTED

You have 2 **OPTIONS** for your **UPPER Hull Support Plate**

OPTION 1:
HAS ONE
BEND



OPTION 2:
HAS TWO
BENDS



There are 6 **POSITIONS** for the **BOTTOM Hull Support Plate**



Slot 1

Slot 6

Completed

Hopefully your clamp looks like this once you finish the assembly!





NOW CHECK THIS TABLE TO SEE THE CORRECT OPTIONS FOR YOUR SKI MODEL

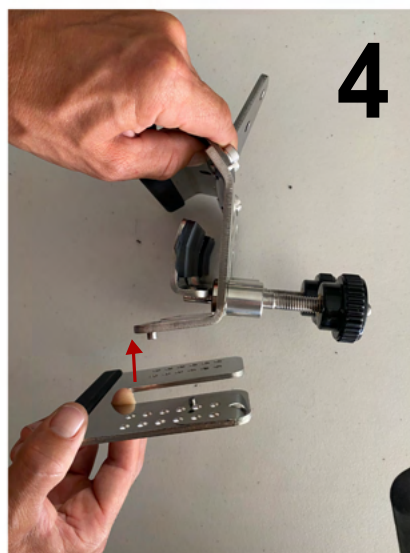
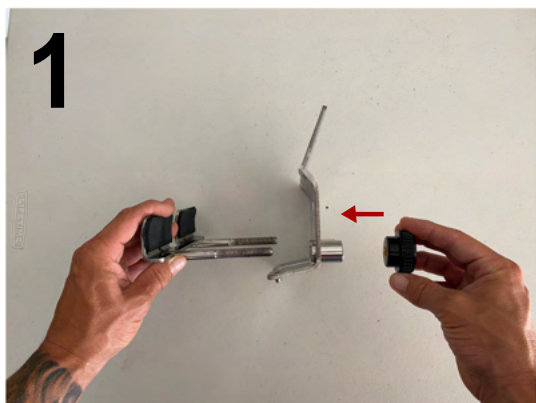
SEADOO	BOTTOM hull support plate: SLOT NUMBER	UPPER hull support plate: OPTION
2018 onwards, RXTX 300, GTX 155, GTX 230, GTX 300	2	1
2020 GTR 230, GTI 90/130	3	1
2010-2017 RXT, RXP, GTX, WAKE PRO	3	2
2011-2017 GTI, RXP, GTR, WAKE 155	3	2
2002-2009 RXT, GTX, RXP	2	2
2002-2010 GTI	2	2
All Models Fish Pro	2	2
Spark	Front rack 6 Rear rack 2	1
YAMAHA		
EX, VX MODELS	5	2
FZ MODELS	4	1
GP1800	5	2
2012-2018 FX MODELS	5	2
2019 Onwards FX Models	6	2
2002-2011 FX MODELS	4	1
GP1200/1300 MODELS	6	2
HONDA		
R12X	3	2
F12X	3	2
F15X	3	2
KAWASAKI		
ULTRA MODELS	2	2
STX MODELS	3	2



FITMENT INSTRUCTIONS

THE STEP BY STEP

Let's get into it! First step is assembling your clamp.
Make sure you nail this, because this little darling is gonna hold all your boards onto the ski.



Check the table in the previous page to see which holes you should use!

Check the table in the previous page to see which upper hull support plate you should use!

NAILED IT!

If you have followed the steps correctly your clamp should look as sick as this one





FITMENT INSTRUCTIONS THE STEP BY STEP

Next, attach your board rack to the clamp. Pretty straight forward: unscrew, fit and screw again. Can't go wrong!

LOOK AT THAT! ➔

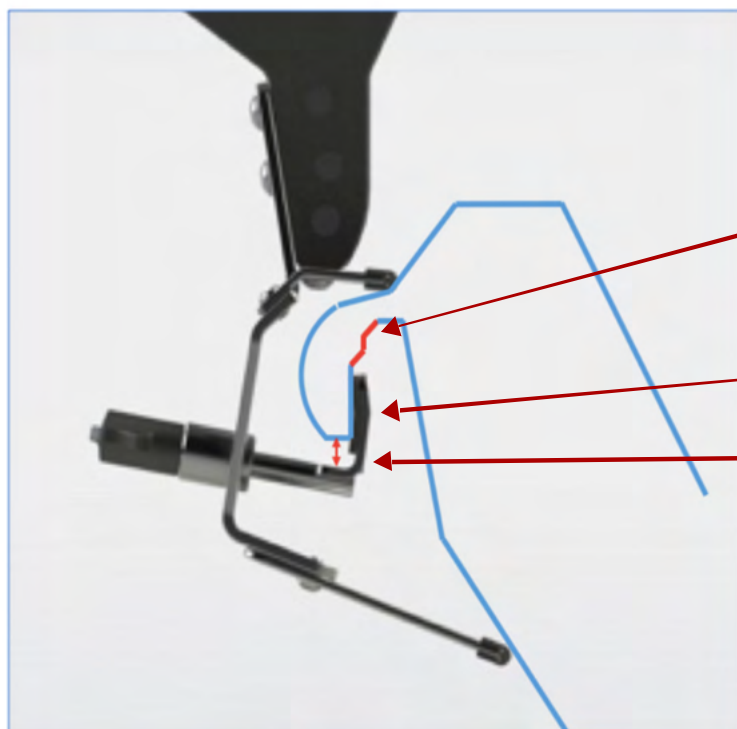


ATTACHING IT TO THE JETSKI

WE RECOMMEND ATTACHING THE RACK TO THE RIGHT SIDE OF THE JET SKI.

First look for any pop rivets sitting on the inside of the gunwale/ bumper channel on your jet ski that is holding the protective bumper rubber on. If pop rivets are found, make sure the inner jaw (jaw with threaded studs) is not positioned on them, as this will damage the inner jaw rubber pads. There is a gap between each inner jaw plate to compensate for any pop rivets or bolts.

ATTENTION YAMAHA SKI OWNERS!



On the inside of Yamaha's gunwales, they have a ridge at the top, the inner jaw should be placed below this ridge.



Uneven ridge
on YAMAHA'S

CORRECT POSITION

Leave approx. 5-10mm gap at
the bottom for Yamaha's only.

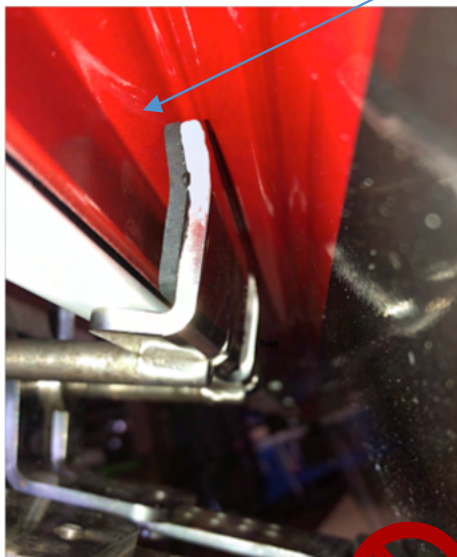
*Check next page for visual
example!



FITMENT INSTRUCTIONS THE STEP BY STEP

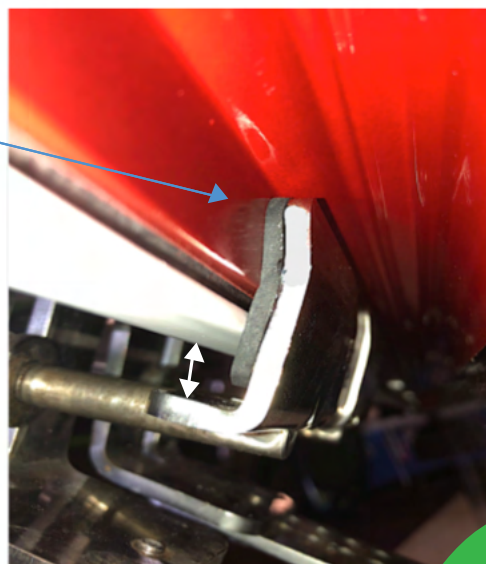
If the clamp is sitting on top of the uneven upper ridge on your Yamaha, try again!

YOU GOT IT WRONG!



You want your clamp sitting on the lower section like this

And this is your 5-10mm gap on the bottom



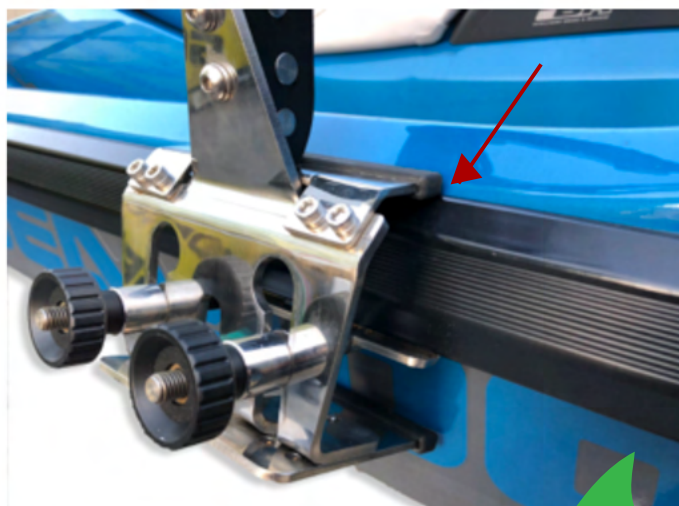
LET'S GET IT STRAIGHT

Make sure the board rack posts are sitting near vertically straight, if not your adjustments or fitting may be wrong and can weaken the clamping strength, the adjustable bottom hull support plate with multiple holes in it dictates the angle the rack posts will be on.



FITMENT INSTRUCTIONS THE STEP BY STEP

For Yamaha's & Sea-Doo's, make sure the upper hull support plate is sitting horizontally flush and neat in the edge between the gunwale rubber and fiberglass groove where the two meets. (Kawasaki Ultra and Honda Aquatrax are slightly different)



Double check that the inner jaw is sitting horizontally straight so it is parallel with the gunwale edge and if you are clamping onto a Yamaha to have the 5-10mm gap. When clamping DO NOT place the rubber pad over rivets as this will damage the rubber pads and potentially cause a non-secure fitment.





FITMENT INSTRUCTIONS THE STEP BY STEP

GIVE IT A SQUEEZE!

Proceed to tighten BOTH knobs at the SAME time with even tension until you have a nice secure, firm fitment. The amount of turns will vary between each make and model Jet Ski. Generally 3 complete turns, give or take...



For a 6ft Surfboard space the racks approximately 60-80cm apart from each other sitting in the middle of the ski. The rack posts are shaped and profiled for surfboards to slot in with the top - waxed sides facing each other and fins at opposite ends. We suggest always putting the larger board in the bottom slot.

Always double check all the bolts after every few times of use to ensure they are tight.

SPLASH GUARD

A splash guard is provided with every kit. If you experience any water kick back at low speeds, you can fit the splash guard on top of the clamp to block it.

