

### STEP 1:

Remove the cupboard from the carry bag. Be aware of the loose shelves inside the cupboard.

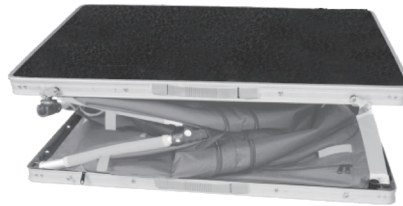


A X 6



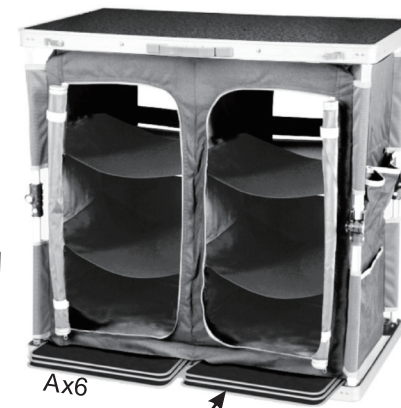
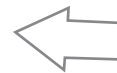
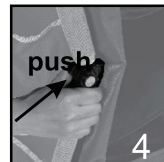
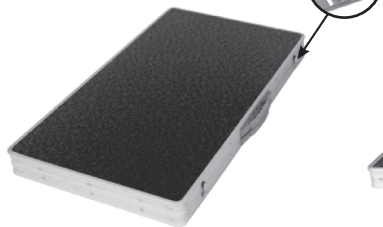
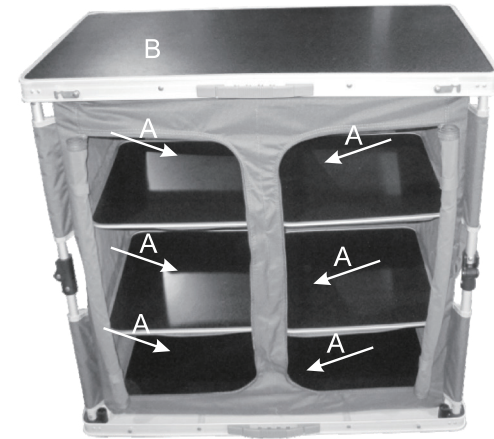
### STEP 2:

Lift the top panel and click corner supports into place to secure into an upright standing position.



### STEP 3:

Insert shelves.



Ax6

Placed at the bottom



### CAUTION:

To be assembled by an adult only.

### PACKING AWAY:

To pack away, unclip folding corner supports on legs and fold down into the lid. Clip closed and return to carry bag.