

PITCHING INSTRUCTIONS

1. Test Run

Practice pitching your tent at home to ensure you understand the process.

2. Pick A Site

When finding a site for your tent, try to find an area that is sheltered, flat, and free from sharp objects. If possible, position your tent with the front door facing away from the prevailing wind. Also, try not to pitch your tent under trees as falling branches can damage the tent and falling sap can damage the fabric.

3. Ground Sheet

To protect your tent from dirt and damage, it is recommended to use a ZEMPIRE® Ground Sheet. Ground Sheets not only protect your tent floor but also make pack down faster and cleaner. The Ground Sheet should be pegged down in the correct position first, then the tent placed on top. ZEMPIRE® Ground Sheets are slightly smaller than the size of the tent floor to ensure water does not collect between the two layers.

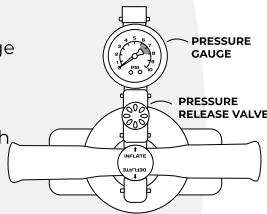
4. Unpacking

When you take your tent out for the first time, take a moment to see how it is packed or take a photo with your phone. This will help you when it comes to packing your tent away. Separate and identify the different parts included with your tent. Your tent fly will be pre-attached and does not require removing when taking the tent down. The package should include the following:

- Tent Fly (Pre-attached)
- Tent Inner
- Awning poles x 2 (in 6 pieces)
- Pump
- Pressure release valve
- Pressure gauge
- Pegs
- Guy Ropes (Pre-attached)
- Additional Guy Ropes

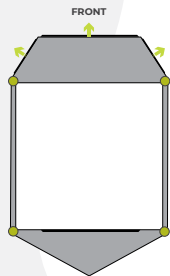
5. Pump Setup

Your ZEMPIRE® Pro Series Pump included with your tent comes with a pressure gauge and pressure release valve to ensure that the poles are inflated to the correct level. The pump switches between two modes. Double action mode allows you to add high volume at low pressure and is ideal for the first half of inflation. Single action mode offers low volume at high pressure and enables you to get the last few PSI into the tubes easily. The pump accessories should be assembled in the following configuration:



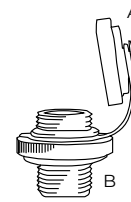
6. Layout

Unroll the tent with the floor facing down and locate the front entry door. Orient the tent in the correct direction for your selected site. Peg out the 4 corners of the tent floor ensuring there is significant tension between each point and that the floor sits as flat as possible. For best results, pegs should be angled away from your tent at 45°.



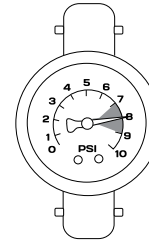
7. Airflow

To enable air to enter the tent during the pitching process, all door and window covers should be opened. It is important however that the mesh door remains closed during the pitching process to ensure the tent holds its correct shape during inflation and is not over tightened, causing damage.



8. Boston Valve Attachment

The external inflation valves (x2) are located on the left side (facing the front of the tent) of the tent, under the rain fly. Before inflating, remove the valve cap (A) and screw the master valve (B) into the threaded section attached to the poles. For deflation, simply unscrew the master valve so air can escape. It is important that the valve is not cross threaded and is firmly tightened. Make sure no fabric is stuck in the valve, as this will cause air to leak.



9. Inflation

Inflate the tube to about 4 PSI, then go inside the tent and lift the frame until it stands on its own. Continue to inflate the tube to 7-9 PSI. The pressure-release valve will "hiss" when 9 PSI is reached. It is important not to over-inflate the tube. It is recommended that during very hot weather 7 PSI is used to provide room for expansion during the day. In cooler or windier conditions 9 PSI is recommended.

As the pole inflates, it may be necessary to support the center of the pole until it assumes the correct shape. It is also a good time to ensure that the base of each pole is sitting correctly on the velcro patches as poles can sometimes move off the velcro during the pitching process.

10. Setting the Floor

It may be necessary to align the base of each pole so that the floor sits flat and taught. You may also need to realign the corner pegging points so the floor sits flat. At this point, it helps if the front door is completely closed when pegging out the front of the tent.

11. Pegging

Peg the remaining peg loops around the tent. Durable steel pegs are included with your tent which will be suitable for the majority of conditions. However, when camping at a rocky or loose sandy location, you may wish to purchase more specialised pegs. A range of specialised ZEMPIRE® Pegs are available to purchase.

12. Guy Ropes

Guy ropes are pre-attached on all ZEMPIRE® tents. It is recommended that guy ropes are used at all times. It is important not to over-tighten the guy ropes. They should sit taught but should not distort the shape of the tent.

13. Awning Poles

Awning poles are included with your tent. These enable the front awning to be poled-out, creating additional shade and living space. The 6 sections of poles fit together to create 2 poles. Open both doors of the awning fly and insert the poles through the eyelets on the lower edge. Attach guy ropes and peg out to secure.

14. Deflation

- Close the mesh door, leaving the cover open to allow air to escape from the tent.
- Unpeg all guy ropes and roll up to ensure they do not get tangled during packing.
- Unpeg the peg points, excluding the 4 corners. Clean and dry pegs before storing in the bag.
- Unscrew each of the master valves on the left side of the tent (this may be quite loud). Wait for all the air to be expelled.
- Unpeg the 4 corners of the tent, clean and pack the pegs.
- Lay the carry bag at the valve end of the tent.
- Lay out the tent so that you create a clean rectangular shape.
- Fold the tent in half from front to rear and then in half again.
- Place the pump, peg bag and awning poles on top of the folded tent at the opposite side of the valves.
- Now roll the tent from that "non-valve side" end toward the valves.
- Use the supplied webbing straps (x2) to secure the rolled tent at each end and tension it so that it is firmly packed.
- Tip the rolled tent onto its side, pull the carry bag over the tent, and tension the carry bag draw cord and compression straps.

UV Degradation

Tent fabrics can be weakened by prolonged exposure to sunlight. Under normal holiday use, your ZEMPIRE® tent will give you many years of camping enjoyment. However, extended use in strong sunlight will cause degradation. UV degradation is not covered under warranty. The warranty does not cover permanent sites, displays or commercial use.

Please turn page for Care Instructions and Warranty.



WARNING

KEEP ALL FLAME AND HEAT SOURCES AWAY FROM THIS TENT FABRIC

For a detailed description of all the features and specifications of this product please visit our website.

WWW.ZEMPIRECAMPING.COM

Designed and tested in New Zealand. Made with care in China.

WARRANTY & CARE

2 Year Tent Guarantee

Please take time to read about the protection we offer you.

All our tents come with a guarantee designed to protect you as our valued customer. Flow Imports Ltd., the makers of ZEMPIRE® Camping Equipment tents, will repair or replace this tent, at their discretion, should it fail due to faulty materials or manufacture for a period of 2 years from the date of sale.

The Guarantee is subject to the following conditions:

1. The Guarantee only applies to an original purchaser who purchased this tent from an approved retail outlet.
2. The Guarantee does not apply if the tent has been used for anything other than reasonable personal camping use. Commercial use (e.g. rental) or continuous use as a residence are expressly excluded.
3. Damage due to normal wear and tear, accident, acts of God, negligence (other than by Flow Imports Ltd.), failure by the purchaser to ensure instructions for setting up and care are observed, deterioration due to abnormal exposure to ultraviolet light, insect or mildew attack, or any other cause reasonably beyond the control of Flow Imports Ltd. are not covered.
4. If redress is sought under the terms of this Guarantee, then the tent must be returned by the purchaser to the outlet from where it was purchased within the Guarantee period, in a clean, dry state and with proof of purchase.
5. All transport costs and any other indirect costs are excluded from the Guarantee.
6. Flow Imports Ltd. reserves the right to make a reasonable charge for repairs which it determines are not within the scope of the Guarantee.
7. The Guarantee does not limit, modify or exclude any rights under any law if doing so would contravene that law or make any part of this Guarantee invalid. However, Flow Imports Ltd.:
 - a) excludes (to the extent permitted by applicable law) all conditions and warranties that might otherwise be implied; and
 - b) limits its liability for breach of any such condition or Guarantee that it cannot exclude together with its liability under the Guarantee, to repairing or replacing the goods or paying the cost of having the goods repaired or replaced (at Flow Imports' option).

This tent has been made with meticulous care and attention to detail. Providing it's properly looked after and correctly stored, it will help you enjoy all that nature has to offer for years to come.

Care Instructions

1. Ensure guy ropes are out at all times during use.
2. Never pack your tent away wet. If you must take your tent down when wet, ensure that it is dried completely as soon as possible to prevent mildew forming.
3. If mildew does form on your tent, wash off with warm water and a soft brush to prevent further growth, do not use soap or detergents.
4. Do not use an open flame inside your tent. The fabric has been treated with a fire retardant but is in no way fire-proof.
5. Clean all pegs and poles before storing.
6. This tent is not designed to withstand storm conditions. During strong winds, it is recommended that the tent be taken down.
7. Do not leave your tent pitched unnecessarily for extended periods of time. UV light damages the fly and will shorten the life of your tent.

Condensation

It is important that lower vents are opened at all times to reduce the risk of condensation. During humid or damp conditions, it is recommended that the waterproof door covers are opened to expose the mesh layer, enabling additional airflow throughout your tent.

Do not use foam swabs or non-bonded mats directly on the tent floor. This will cause condensation between the mat and floor and if not dried out, can lead to mildew forming.

Get out more – you owe it to yourself!



Zempire[®]
CAMPING EQUIPMENT