



# **+ 4WD UTE SINGLE DRAWER**

## **Instruction Manual**



PLU: 605332  
CODE: CZ-003A2  
Manufactured and packaged for  
SRGS PTY LTD  
ABN 23 113 230 050  
6 Coulthards Avenue,  
Strathpine QLD 4500, Australia  
MADE IN CHINA

## + 4WD UTE Single Drawer – PLU 605332

- + Thank you for purchasing the XTM 4WD UTE Single Drawer.  
Before use, please ensure that the latches inside the drawer will stop on the bumpers inside the drawer casing.

Below is an image of the latches inside the drawer. The drawer tub can be removed by pulling these two latches together.



NOTE: The weight ratings for the drawer are 60kgs on tub and 100kgs on top.

## + Part List



### + Drawer Specifications

External Size: L120 x W50 x H24.5cm  
Net Weight: 32kgs  
Drawer Pull Out: 81cm



### + Mounting Kit

4 x M10 x 50mm bolts  
8 x M10 washers  
4 x M10 nylon nuts  
4 x M10 spring washers



### + Tie Down Kit

4 x M8 x 12mm bolts  
(For stacking two drawers together)  
4 x tie down rings  
4 x M8 nylon washers  
4 x M8 washers

## + Locating Mounting Space in Vehicle



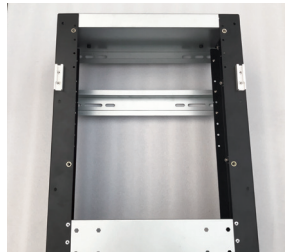
+ Open the tailgate.



+ Locate the mounting rails in a position that will ensure the tailgate can be properly closed once the drawer is fixed in place.



+ Use the M10 bolts, nuts and washers from mounting kit to bolt drawer. Some vehicles may require longer or shorter bolts. Please check your owner's handbook or contact your local vehicle dealer if unable to locate.



+ To access the bottom mounting rail, loosen the screws on the top panel and carefully remove the top panel. Then gently pull out the drawer tub. After assembly make sure the top panel is screwed back firmly into place.



+ Release the two latches at rear of drawer for ease of removal.

## + Stackable Vertical Drawer Option

+ The universal design allows drawers to be stacked. Use the M8 bolts and washers/nuts provided and follow the steps below:



## + Configurations

### + IMPORTANT:

This UTE drawer can only be stacked with the identical style. It cannot be stacked with any other types of drawers.

